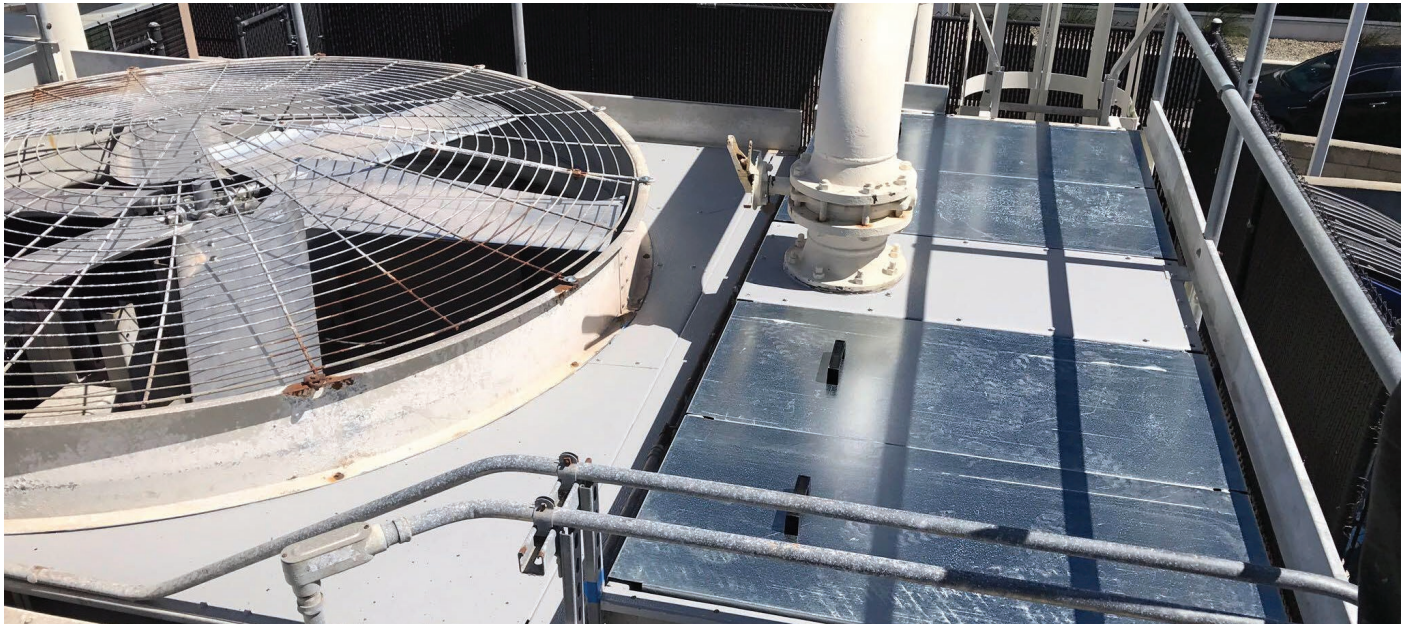


Application	HVAC
Problem	Hot water basin covers on BAC model 33373 cooling tower were corroded and created dangerous conditions for routine cleaning and maintenance.
Solution	After taking cover dimensions, SPX fabricated new galvanized steel basin covers.
Results	Basin covers created a clean and functional walking surface while keeping nozzles clear of external debris; extended tower life; improved tower appearance.



Contact your Marley representative to identify parts for other manufacturers' towers: spxcooling.com/relocator

SPX COOLING TECHNOLOGIES, INC.

7401 WEST 129 STREET
 OVERLAND PARK, KS 66213 USA
 913 664 7400 | spxcooling@spx.com
spxcooling.com

CCS-CC-17 | ISSUED 08/2017
 COPYRIGHT © 2017 SPX CORPORATION

In the interest of technological progress, all products are subject to design and/or material change without notice.

