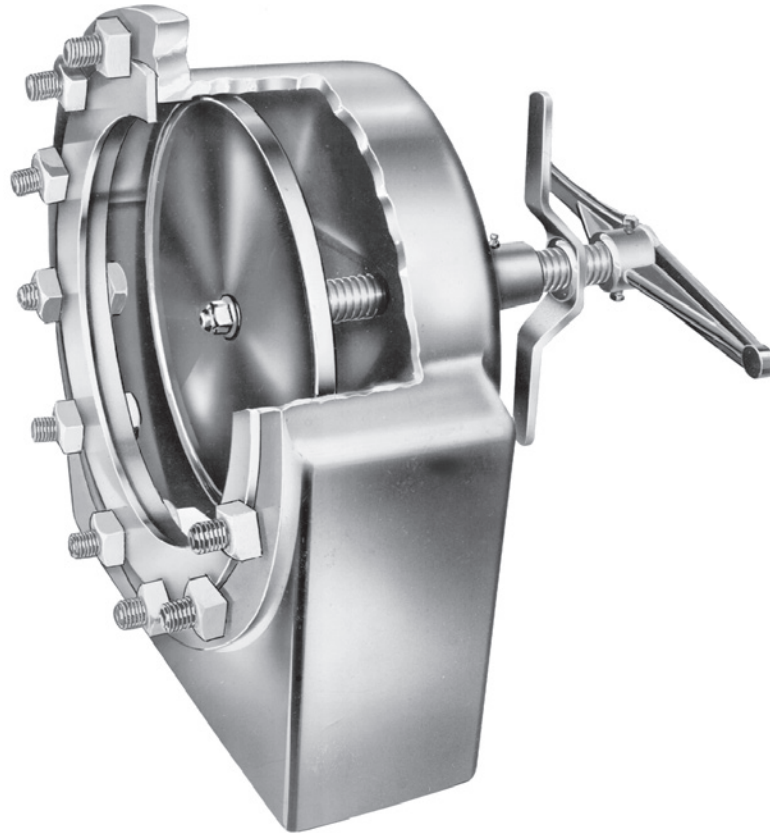


/ Marley Horizontal Control Valve /



Marley HC Valves are available in 6", 8", 10", 12", 14", 16", 18" and 20" sizes with flanges adaptable to fiberglass, steel, and cast iron distribution systems.

Valve body proportions and the arrangement of internal parts provide a low discharge velocity and confine splash, resulting in low pressure drop.

The valve closure disc, has a machined lip which closes on a heavy neoprene gasket, avoiding maintenance of expensive metal seats. In a shut-off position, the stem and yoke are external to the water, eliminating the necessity of valve stem packing.

The greatly simplified design ensures long trouble-free operation with no costly repairs or maintenance.

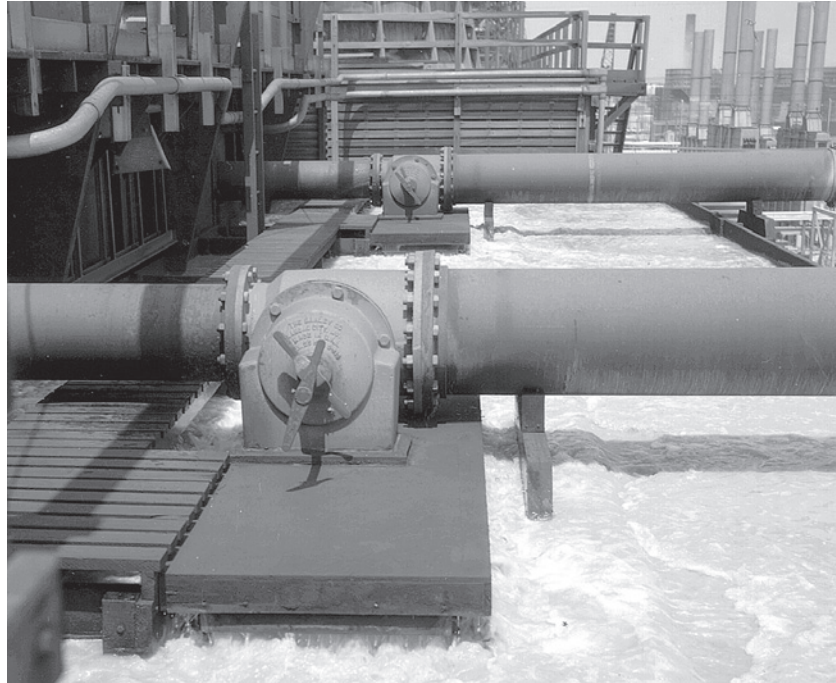
Other outstanding features:

- Cast iron body
- Cast iron operating bar
- Cast iron locking bar
- Stainless steel stem
- Neoprene joint gasket and seat for floating valve disc
- No packing or packing gland
- Locking bar maintains positive valve adjustment

SPX[®]

COOLING TECHNOLOGIES

/ Marley Horizontal Control Valve /



Greatly simplified design insures long trouble-free operation with no costly repairs or maintenance.

SIZE	CAPACITY GPM		WEIGHT (lb)
	@ 5 FPS	@ 10 FPS	
6" flange	425	850	45
8" flange	750	1500	76
10" flange	1200	2400	94
12" flange	1750	3500	143
14" flange	2350	4700	180
16" flange	3000	6000	235
18" flange	4000	8000	258
20" flange	5000	10000	300

SPX[®]
COOLING TECHNOLOGIES

7401 WEST 129 STREET | OVERLAND PARK, KANSAS 66213 UNITED STATES | 913 664 7400 | spxcooling@spx.com | spxcooling.com

In the interest of technological progress, all products are subject to design and/or material change without notice.
©2011 SPX Cooling Technologies, Inc. | Printed in USA

FCV-70C