

Overview

NCWD is an innovative, patented factory assembled hybrid cooling tower designed specifically for plume reduction.

Primary Benefits

- Designed to reduce 20-30% more visible plume versus series path design, based on a percentage of year with plume and ASHRAE weather data
- Unique design with high single-cell capacity, allows for the same tonnage as series path cooling towers, but with up to 40% less operating weight and up to 44% lower power consumption
- Factory assembled for easy configuration and installation

Benefit Detail

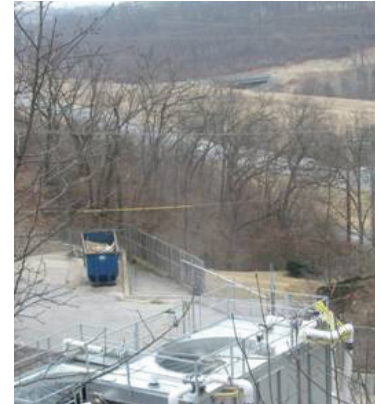
Better Plume Reduction:

- Designed to abate plume at lower temperatures with the same amount of humidity
- Designed for one-third to one-fifth the visible plume versus series path designs based on a percentage of year with plume and ASHRAE weather data
- Up to 20% water savings when running coil section versus standard cooling tower

more 



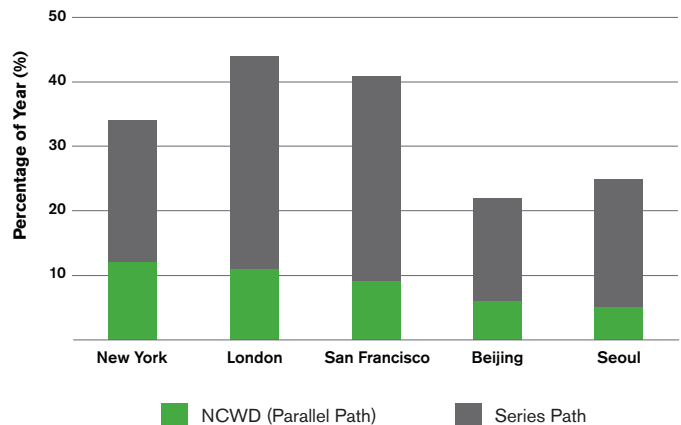
Without Plume Abatement



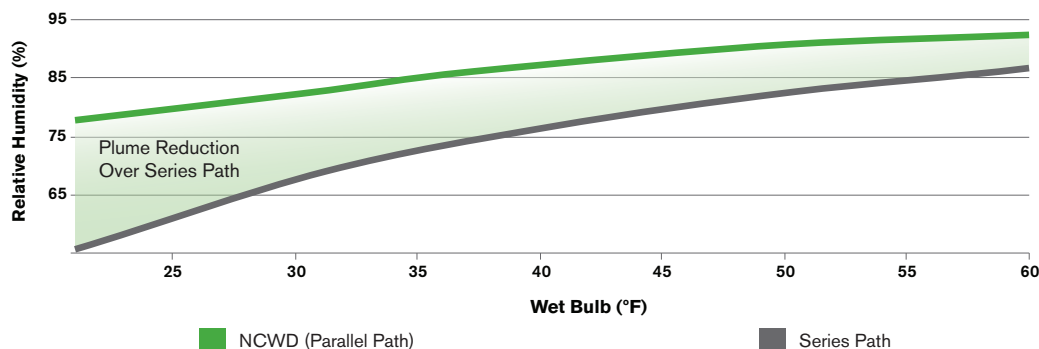
With Plume Abatement

Conditions: Wet Bulb 35.6°F — RH 81.0% — Dry Bulb 37.9°F
Range 17.8°F — Cold Water 72.1°F — Tangency 98.9%

Percentage of Year with Visible Plume



Fogging Occurance



Benefit Detail

Unique Design Advantages:

- Lower fan power consumption due to lower static pressure saving up to 60 hp per cell
- Recirculation pump is not required saving up to 7.5 hp per cell
- Up to 60% lower operating weight, saving structural supporting steel costs
- Up to 59% smaller footprint, reducing structural steel cost and site space requirements
- No auxiliary heat source required (e.g. steam boiler or hot water loop)

Factory Assembled:

- Easier quoting, lower lead-times, lower site installation costs typical of factory assembled versus field erected towers

Capacity Range

393 to 1033 tons per cell at 95°/85°/78°F
1180 – 3100 gpm (268 – 704 m³/hr)

Features / Options

- Geardrive
- Integral Louvers and Eliminators
- Non-Corrosive Copper or Stainless Steel Coil
- Low Sound Capabilities
- Plenum Walkways
- Access Platforms
- Motor Outside Airstream
- Single Inlet Piping

	Parallel Path (Single-Cell NCWD)	Series Path* (Three Cells)
Cooling Tons	849	849
Fan (hp / kW)	75 / 56	135 / 100
Recirculation Pump (hp / kW)	Not Required	22.5 / 16.5
Operating Weight (lb / kg)	45,105 / 20,460	114,000 / 51,710
Footprint (sq ft / m ²)	270 / 25	648 / 60

*Source: B.A.C.® HXV published data

Key Contacts

Engineering / Technical Questions: fap@spx.com

Common Applications

- Airports
- Roadway safety
- Visual pollution concerns
- Urban environments
- Environmentally conscious building
- Low water availability



SPX®

7401 WEST 129 STREET | OVERLAND PARK, KANSAS 66213 UNITED STATES | 913 664 7400 | spxcooling@spx.com | spxcooling.com

Contact your Marley Sales Representative at spxcooling.com/en/sales/

In the interest of technological progress, all products are subject to design and/or material change without notice.
©2011 SPX Cooling Technologies, Inc. | Printed in USA