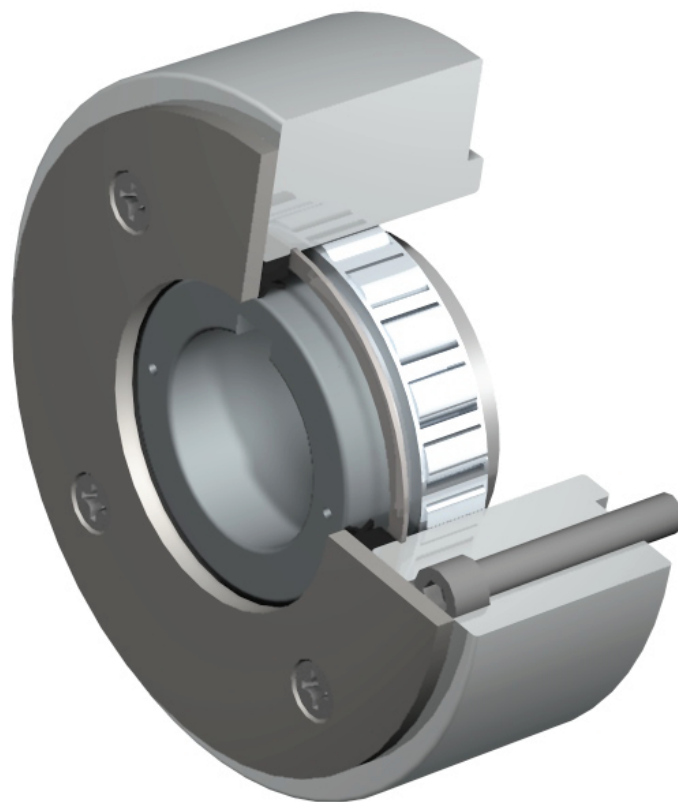


/ Marley Sprag Clutch Backstop /



The Marley® integral Sprag Clutch Backstop is custom designed and configured specifically for a Marley Geareducer® with input shaft diameters of 2.375" and 2.625". Also referred to as a sprag clutch anti-rotation device, these units are designed to prevent reverse rotation of the fan, Geareducer and motor. Designed specifically for use with the current 32.2, 3400, 3600 and 4000 Geareducer models, they can also be utilized to fit legacy 32.1T, 34.3T, 34.4, 36 and 38 Geareducer models.

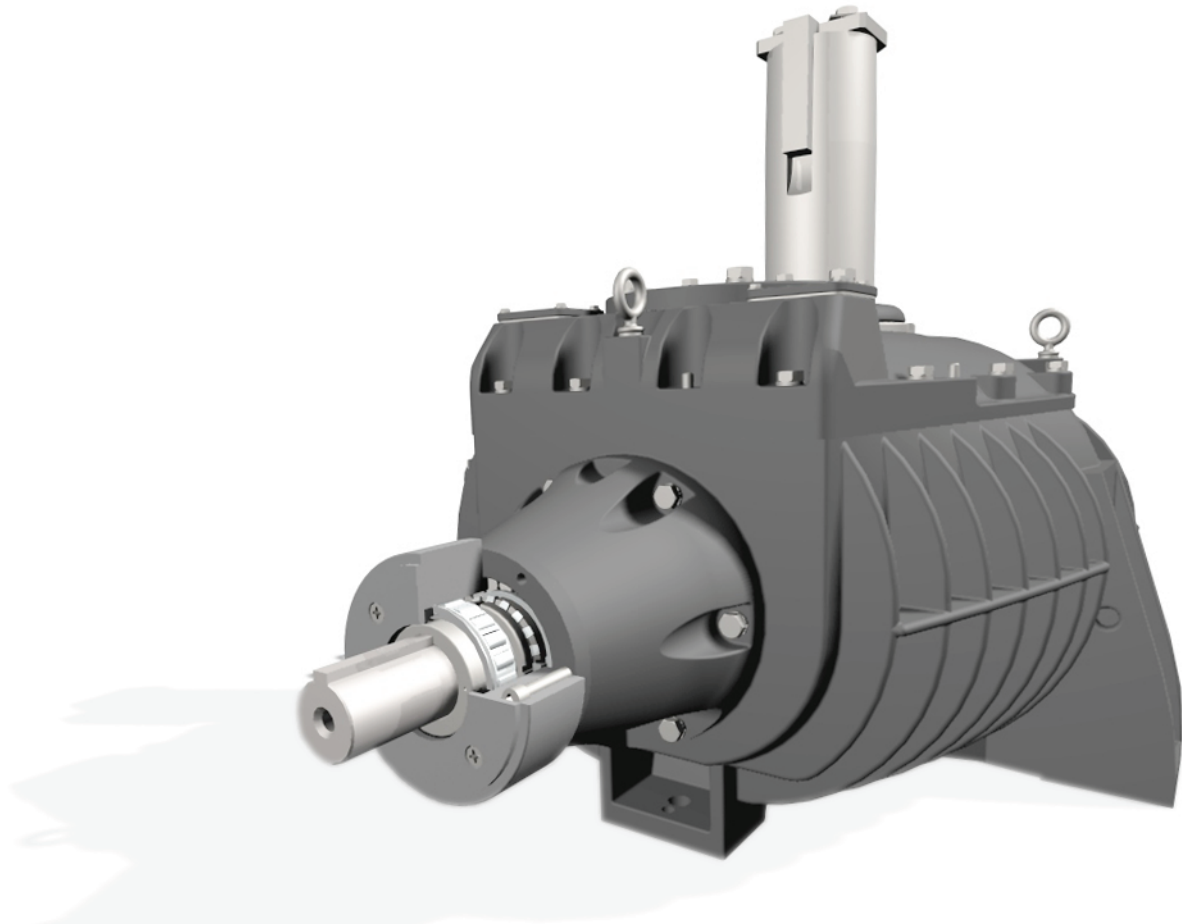
When operating, the outer race is stationary and the inner race is rotating. When facing the input shaft of the Geareducer, the forward (over-running) direction is clockwise.

In contrast to conventional sprag clutch devices which may continuously wear, this device utilizes a "Lift-off" sprag functionality which alleviates the wear issue once typical rotation speeds are reached.

This feature greatly diminishes the friction and heat generated, thus promoting longevity for both the clutch unit and the Geareducer itself.



/ Marley Sprag Clutch Backstop /



The backstop replaces the pinion cage cap on the Geareducer, bolting directly to the pinion cage casting. This allows the backstop to be lubricated from the internal Geareducer oil supply.

The external cover plate protects the lip seal, aiding in the elimination of external debris intrusion.

The exterior is painted with epoxy to provide additional protection against corrosion.

The backstop shall have a torque capacity of at least 1100 ft-lb_f (1490 N·m) and shall be capable of continuous overrunning operation at 1800 rpm.

SPX[®]

COOLING TECHNOLOGIES

7401 WEST 129 STREET | OVERLAND PARK, KANSAS 66213 UNITED STATES | 913 664 7400 | spxcooling@spx.com | spxcooling.com

In the interest of technological progress, all products are subject to design and/or material change without notice.
©2008 SPX Cooling Technologies, Inc. | Printed in USA

SP-ARD