

/ Marley Series 15 Crossflow Cooling Tower /

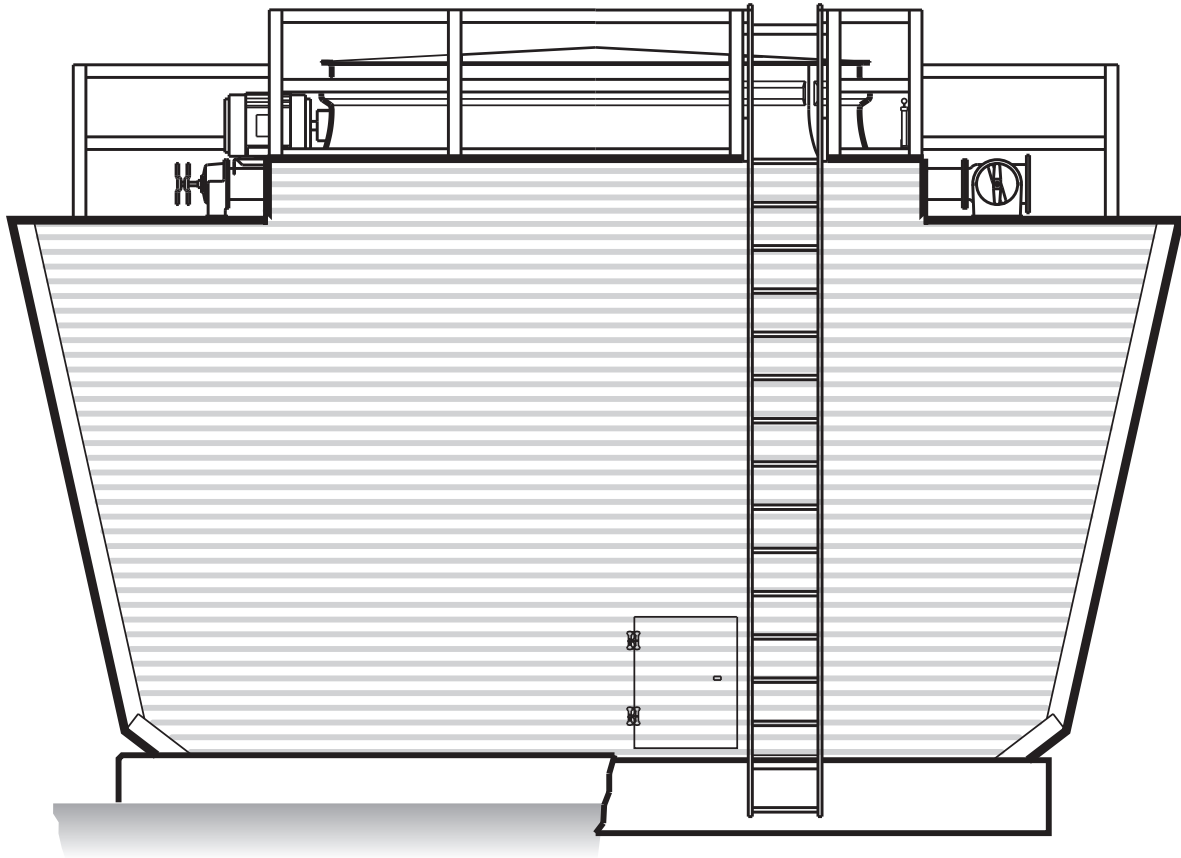
Product Specifications



Contents

	Subject	Page
Base	Intent _____	3
	Base _____	4
	Thermal Performance _____	5
	Construction _____	6
	Fan Deck and Fan Cylinder _____	7
	Mechanical Equipment _____	8
	Fill _____	9
	Drift Eliminators _____	9
	Hot Water Distribution System _____	10
	Casing and Louvers _____	10
	Access and Safety _____	10
	Cold Water Basin _____	11
Scope of Work _____	11	
Options	Control Options	
	Control System _____	12
	Basin Heaters _____	12
	Variable Speed Drive _____	13
	Vibration Limit Switch _____	14
	Convenience and Safety Options	
	Stairway _____	15
	Plenum Walkway _____	15
	Ladder Extension _____	15
	Ladder Safety Cage _____	15
	Oil Level Sight Glass _____	16
	Miscellaneous Options	
	Wood Cold Water Basin _____	16
	PVC Fill Splash Bars _____	16
	Redwood Components _____	16
	Hot Water Basin Covers _____	17
	Air Inlet Screens _____	17
	Watertight Partitions Between Cells _____	17
	FRP Louvers _____	17
Low Noise Tower _____	18	
Fire Safety Options _____	19	

Series 15 Cooling Tower



The Series 15 is a field-erected, splash fill, crossflow, wood cooling tower, designed to serve all normal cooling water systems—as well as those “dirty water” systems which would place the long term operation of a film fill tower in jeopardy. The Series 15 is evolved from the crossflow concept of cooling towers pioneered by Marley in 1938, incorporating over 65 years of design advancements that our customers have found valuable. The Series 15 represents the current state of the art in this cooling tower category.

This publication not only relates the language to use in describing an appropriate Series 15 cooling tower—but also defines why certain items and features are important enough to specify with the intention of insisting upon compliance by all bidders. The left hand column of pages 4 through 19 provides appropriate text for the various specification paragraphs, whereas the right hand column comments on the meaning of the subject matter and explains its value.

Pages 4 through 11 indicate those paragraphs which will result in the purchase of a cooling tower which will not only accomplish the specified thermal performance, but which will include normal operation and maintenance-enhancing accessories and features. It will also incorporate those standard materials which testing and experience has proven to provide best results in normal operating conditions.

Pages 12 through 19 provide some paragraphs intended to add those features, components, and materials that will customize the tower to meet the user's requirements.

Space does not permit definition and explanation of all of the possible options that can be applied to the Series 15. We realize that you, the purchaser, must be happy with the tower's characteristics, and we are prepared to provide—or provide for—any reasonable enhancement that you are willing to define and purchase.

Your needs will become part of the continuing evolution of this Marley product line.

Series 15 Cooling Tower

Specifications

1.0 Base:

1.1 Furnish and install an induced draft, crossflow type, field erected, wood framed, splash fill, industrial-duty cooling tower of ____ cell(s), as shown on plans. The limiting overall dimensions of the tower shall be ____ wide, ____ long, and ____ high. Total operating horsepower of all fans shall not exceed ____ hp, consisting of ____ @ ____ hp motor(s). Tower shall be similar and equal in all respects to Marley Model _____.

Specification Value

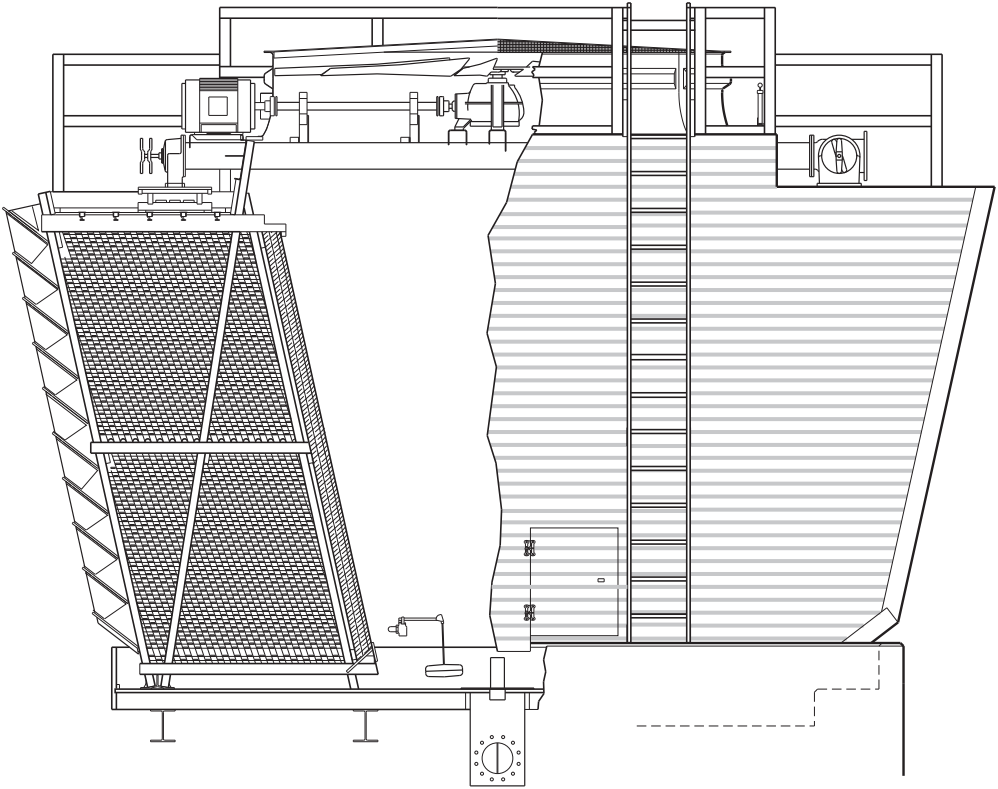
□ □ □

Your specification base establishes the type, configuration, base material, and physical limitations of the cooling tower to be quoted. During the planning and layout stages of your project, you will have focused your attention on a cooling tower selection that fits your space allotment, and whose power usage is acceptable. Limitations on physical size and total operating horsepower avoid the introduction of unforeseen operational and site-related influences. Specifying the number of cells, and the maximum fan hp/cell will work to your advantage.

Crossflow towers are noted for the accessibility and maintainability of all operating components. The spacious interior provides easy access to fill, drift eliminators, all basin accessories—and is one of two primary accessways to the fan, Geareducer[®], and other mechanical components.

At the fan deck level, the hot water distribution basins are easily inspected and cleaned—while the tower is operating, if you wish. The mechanical equipment can also be readily accessed from this level.

Except for the cold water basin, no counterflow tower component requiring routine maintenance is as easily accessed. The confined areas that typify counterflow designs can make difficult work for maintenance personnel!



Series 15 Cooling Tower

Specifications

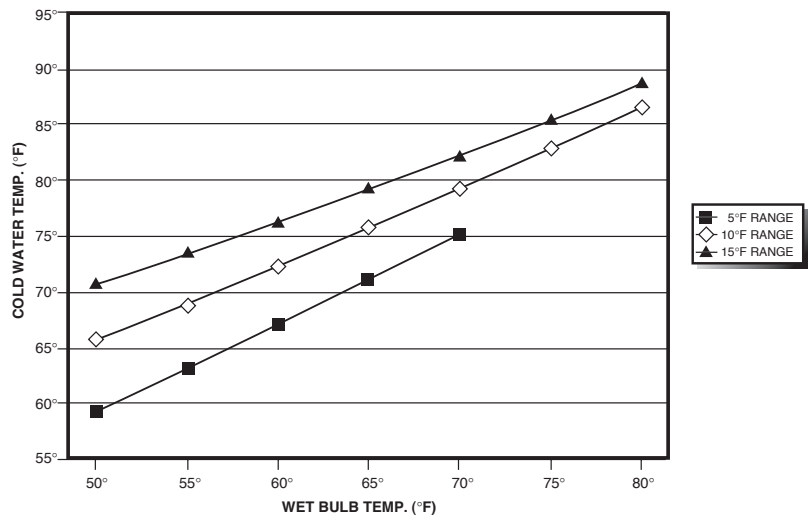
2.0 Thermal Performance:

2.1 The tower shall be capable of cooling _____ GPM of water from _____ °F to _____ °F at a design entering air wet-bulb temperature of _____ °F. The cooling tower manufacturer shall guarantee that the tower supplied will meet the specified performance conditions when the tower is installed according to plans. If, because of a suspected thermal performance deficiency, the owner chooses to conduct an on-site thermal performance test in the presence of the manufacturer, and under the supervision of a qualified, disinterested third party in accordance with CTI (Cooling Technology Institute) test code ATC-105 standards during the first year of operation; and if the tower fails to perform within the limits of test tolerance; then the cooling tower manufacturer shall make alterations as it deems necessary to overcome indicated deficiency. Should alterations prove to be inadequate, the owner, at the cooling tower manufacturer's option, shall be compensated by either (or a combination of both) of the following: (a) Installation of additional cooling tower capacity; (b) A refund of a percentage of the contract price proportional to the deficiency as established.

Specification Value

□ □ □

Some manufacturers resist the need to guarantee the capability of their offering because of blanket certification of their product line by the Cooling Technology Institute. However, CTI certification of a tower's thermal performance is insufficient to assure you that the tower will perform satisfactorily in your situation. Certification is established under relatively controlled conditions, and towers seldom operate under such ideal circumstances. They are affected by nearby structures, machinery, enclosures, effluent from other towers, etc. Responsible and knowledgeable bidders will take such site-specific effects into consideration in selecting the tower—but the specifier must **insist** by the written specification that the designer / manufacturer guarantee this “real world” performance. **Any reluctance on the part of the bidder should cause you some concern.**



Typical cooling tower performance curve

Series 15 Cooling Tower

Specifications

3.0 Construction:

3.1 The tower shall be capable of with-standing water having a pH of 6.5 to 8.0; a chloride content (NaCl) up to 750 ppm; a sulfate content (SO₄) up to 1200 ppm; a sodium bicarbonate content (NaHCO₃) up to 200 ppm; a calcium content (CaCO₃) up to 800 ppm; oil and grease up to 10 ppm; silica (SiO₂) up to 150 ppm; and design hot water temperatures up to 120°F.

3.2 The structural framework of the tower shall be Douglas Fir, designed in accordance with CTI STD-114. Nylon shear plates shall be utilized to transmit loads at critical joints, and all fasteners shall be in accordance with CTI STD-119. Basic design criteria shall be 30 psf wind load and 5%g seismic load.

3.3 All wood components shall be treated after fabrication with chromated copper arsenate (CCA) by the full-cell process to a chemical retention of 0.4 lbs/ft³.

3.4 Structural columns and diagonals shall be 3" x 3". Louver support columns shall be 14" wide assemblies of 1/2" fir plywood, framed and stiffened by 1" fir plywood. Top framing girts shall be 2" x 6". Intermediate and lower girts may be 2" x 4".

3.5 Multicell towers shall include treated Douglas Fir plywood partitions between cells in the plenum area. Partitions shall extend the full height of the tower from the base of fill to the underneath side of the fan deck.

3.6 Column lines shall be on no greater than 4'-0" longitudinal centers, and the base of all perimeter columns shall be firmly anchored to hot-dip galvanized anchor castings. Framing joints shall be made with 1/2" diameter or larger galvanized machine bolts and shear plates, where required.

Specification Value

□ □ □

The limiting water quality values indicated are those which are acceptable for the normal materials of construction specified. **If water of more aggressive quality is anticipated please change hardware material requirement to 300 Series stainless steel, as indicated below and following.**

Cooling Tower Institute design standards take into account the hot, humid environment in which a cooling tower normally operates. This environment can render the limits of customary construction standards inadequate for cooling tower design.

The importance of shear plates is discussed at length in "*Marley Difference, Item S-3*". Ask your Marley representative for a copy.

See notes on page 16 regarding the use and availability of red-wood.

Specification of minimum member sizes assures that all offerings will conform to an industrial level of construction.

Heavier louver columns are necessary to support the extraordinary loads that external louvers are often subjected to. See Casing and Louvers specification page 10.

Multicell towers **must** have plenum partitions between cells. Otherwise, air will be induced downward through an inoperative fan, bypassing the fill entirely. Without these partitions, part-load or off-season operation of the tower would be completely unsatisfactory.

If preferred—or to protect against aggressive water conditions—please change "galvanized" in paragraph 3.6 to "Series 300 stainless steel".

Even in aggressive water conditions, the heavy cross section of the anchor castings normally precludes the need for stainless steel.

Series 15 Cooling Tower

Specifications

4.0 Fan Deck and Fan Cylinder:

- 4.1 The fan deck shall act as a working platform for maintenance personnel. It shall be fabricated of no less than 1" thick, 7 ply, exterior grade, treated Douglas Fir plywood, and shall be designed for a uniform live load of 40 psf or a concentrated load of 400 pounds.
- 4.2 Fan cylinders shall be molded FRP. They shall be anchored to the fan deck structure to provide a consistently stable operating shroud for the fan. Fan cylinders less than 55" in height shall be equipped with a heavy gauge, removable, hot-dip galvanized steel fan guard for the protection of operating personnel.

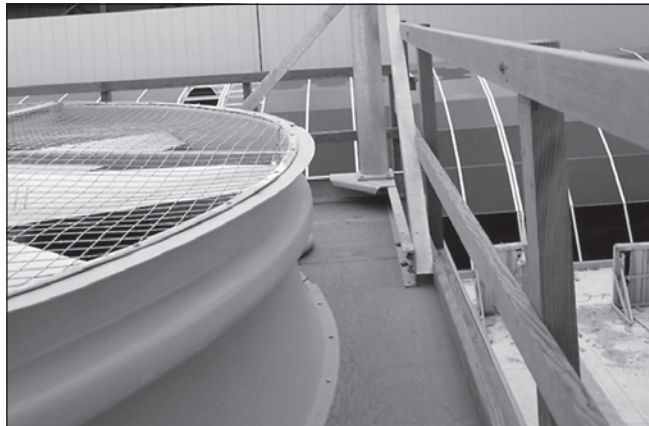
Specification Value

□ □ □

The indicated design values for framing and decking not only give you assurance that the tower can withstand long term operation in a hostile environment—but that it will accept many years of inspection and maintenance traffic by your operating personnel.

Fiberglass-reinforced polyester fan cylinders provide the close tip clearances and smooth airflow contour necessary for good fan performance. The inert, noncorroding nature of FRP assures that these characteristics will persist.

Even in aggressive water conditions, the heavy construction of the fan guard normally precludes the need for stainless steel.



Series 15 Cooling Tower

Specifications

5.0 Mechanical Equipment:

5.1 Fan(s) shall be propeller-type, incorporating heavy duty blades of cast aluminum alloy. Blades shall be individually adjustable. Fan(s) shall be driven through a rightangle, industrial duty, oil lubricated, geared speed reducer that requires no oil changes for the first five (5) years of operation. Speed reducers employing pulleys and belts will not be accepted.

5.2 Motor(s) shall be ____ hp maximum, TEFC, 1.15 service factor, and specially insulated for cooling tower duty. Speed and electrical characteristics shall be 1800 (1800/900) RPM, single winding, ____ phase, ____ hertz, ____ volts.

5.3 Motor shall be located outside the fan cylinder at the fan deck, and shall be connected to the speed reducer by a tubular stainless steel, dynamically balanced driveshaft equipped with neoprene flexible coupling elements.

5.4 A galvanized oil gauge and drain line shall extend from the gear reducer to the outside of the fan cylinder, and shall be equipped with a dip stick for oil level measurement.

5.5 The complete mechanical equipment assembly for each cell shall be supported by a rigid, unitized support that resists misalignment between the motor and the gear reducer. Support shall be heavy-wall tubular steel, to which heavy plate platforms for the motor and gear reducer have been welded and the assembly shall be hot-dip galvanized after fabrication. The support assembly shall also provide an inlet connection for incoming hot water, and shall serve as a crossover pipe to deliver water to both sides of the tower.

5.6 The mechanical equipment assembly shall be warranted for no less than five (5) years. This warranty shall cover the fan(s), speed reducers, driveshafts and couplings, and the unitized supports.

Specification Value

□ □ □

Propeller fans require only half the operating HP of blower fans.

They should be readily adjustable to permit compensation for jobsite conditions that may tend to overload the motor. The fans of one manufacturer require the purchase of special positioners for each increment of fan blade pitch.

Standard fan drives of other manufacturers may use V-belts. Considering the size of fans involved—and the horsepower applied—this is **not** good design practice. Geared drive is far more reliable and trouble free, and is currently offered as an option by at least two other cooling tower manufacturers.

Unless otherwise specified, motor speed will be 1800 RPM in 60 Hertz areas and 1500 RPM in 50 Hertz areas. If you prefer the operating flexibility of two-speed operation, please specify the RPM to be 1800/900 (1500/750 in 50 Hertz regions).

The driveshaft turns at the motor speed and is, therefore, most sensitive to operational imbalance. Stainless steel manufacture assures that the driveshaft will not become unbalanced as a result of corrosion.

The extended oil line to an external dip stick provides a convenient means of checking the level of oil in the Geared reducer. As indicated on page 16, a sight glass is also available in lieu of the dip stick.

If aggressive operating conditions are anticipated, change “galvanized” in paragraph 5.4 to “Series 300 SS”.

Fans of the size used on large cooling towers are applied at speeds and horsepower that generate considerable torque—and structural tubular steel resists this torque very effectively. The Marley torquetube design assures that all of the mechanical equipment remains aligned, and that the rotating fan is properly positioned within the fan cylinder. Hot dip galvanizing **after** fabrication assures that **all** steel surfaces will be heavily coated with zinc for long-term protection against corrosion.

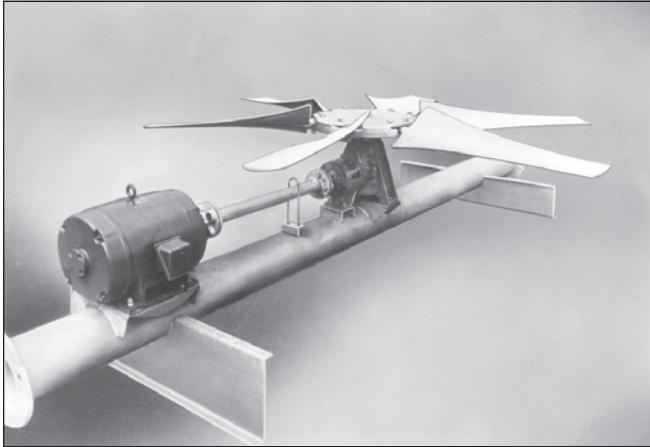
Even in aggressive water conditions, the heavy construction of the unitized support normally precludes the need for stainless steel.

The value of a 5 year mechanical equipment warranty speaks for itself. Except for the motor, all of the mechanical equipment on a Marley tower is made by SPX Cooling Technologies. Cooling tower vendors who purchase commercial fans, gear boxes, driveshafts, etc. may require that you deal directly with those commercial suppliers for warranty satisfaction.

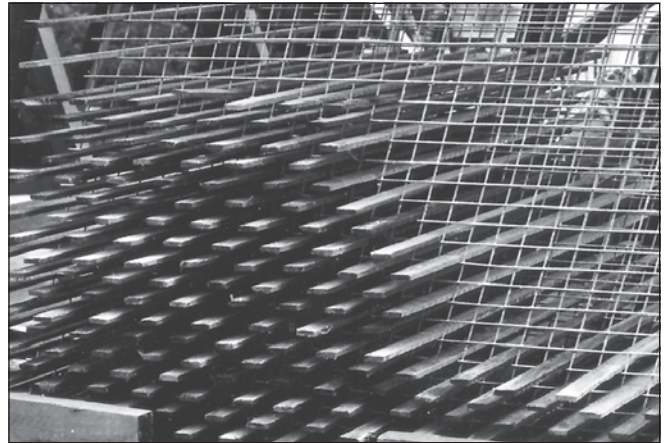
Series 15 Cooling Tower

Specifications

Specification Value



Mechanical Equipment



Wood Splash-type Fill

6.0 Fill:

6.1 Fill shall be splash-type, non-clogging. Splash bars shall be treated Douglas Fir lath, a minimum of 3/8" thick x 1-1/2" wide x 4'-0" long. They shall be installed in a horizontal position, perpendicular to the airflow, supported by FRP (fiber-reinforced polyester) grids hung from 2"x6" and 3"x6" top girts and 2"x4" intermediate girts on 2'-0" centers.

7.0 Drift Eliminators:

7.1 Drift eliminators, installed inboard of the fill, shall be cellular type, triple-pass, manufactured of PVC. They shall be removable and replaceable, and shall limit drift to 0.010% of the circulating water flow. The final pass of the eliminators shall direct airflow toward the fan.

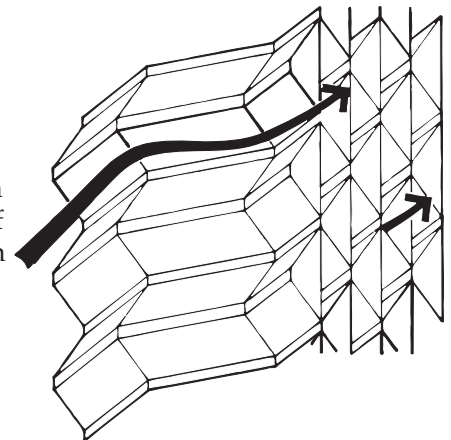
□ □ □

Splash fill has the longest history of successful use in the cooling tower industry. Its wide spacing discourages clogging, and its stout construction will withstand repeated cleaning of deposits associated with the circulating water quality.

See page 17 for optional PVC splash bars.

□ □ □

Vertical blade-type eliminators, as well as misdirected cellular types, cause much of the fan power to be wasted in turning the horizontal flow of air vertical for its exit through the fan cylinder. This power is, of course, not available for contribution to thermal performance.



Drift rate varies with design water loading and air rate, as well as drift eliminator depth and number of directional changes. The indicated rate of 0.010% is easily achievable without premium cost. If a lower rate is required, please discuss with your Marley representative.

Series 15 Cooling Tower

Specifications

8.0 Hot Water Distribution System:

8.1 The mechanical equipment support/crossover pipe shall deliver water to two open hot water basins per cell at the fan deck elevation. Water shall exit these basins to the fill by gravity through metering orifice-type polypropylene nozzles situated in the basin floor. Nozzles shall be easily removable and replaceable.

8.2 Heavy-duty, industrial grade, flow-control valves shall be provided at the inlet to each basin. These valves shall permit both flow balancing and maintenance shut-off to selected cells, or portions of cells. Valves shall have machined cast iron bodies, with stainless steel operating stems, and heavy-duty locking handles.

9.0 Casing and Louvers:

9.1 Tower endwalls shall be cased with ribbed FRP panels, lapped and sealed to prevent leakage. Tower corners shall be finished with FRP corner rolls.

9.2 The air intake faces of the tower shall be louvered full length, full height. Louvers shall be 3/4" thick, 5-ply treated Douglas Fir plywood, supported on no more than 4'-0" centers. They shall be designed to withstand an ice or snow load of 15 psf. Louvers shall be sloped to shed water inward to the tower, and shall be "sight-tight" at horizontal view.

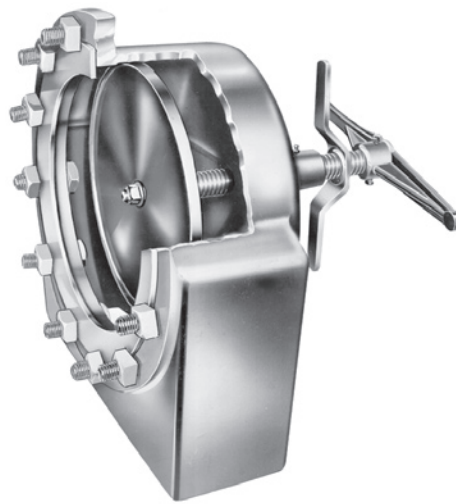
10.0 Access and Safety:

10.1 Single cell towers shall include a 28" wide by 34" high access door in one endwall casing for access to the interior of the tower. Casing access door shall be hinged and equipped with a latch operable from both inside and outside the tower. Multicell towers shall have an access door in both endwalls, and shall include a lift-out door in each transverse partition to give free access through the tower.

Specification Value

□ □ □

Gravity-flow distribution basins are a feature of crossflow type towers, resulting in operating pump heads of from 10 to 20 feet less than that encountered in the pressurized spray systems of counterflow towers. Also, these basins are out where they can be easily inspected—even maintained—while the tower is in operation. Spray systems of counterflow towers, sandwiched between the top of the fill and the drift eliminators, are extremely awkward to access and maintain.



□ □ □

External louvers must be considered mandatory on splash-fill towers. Water that naturally exits the fill on the outboard side will create a swamp outside the tower unless it is returned to the tower by a well designed set of louvers. To be effective, however, the louvers must overlap each other—cover the full vertical face of the fill—and extend the full length of the tower. See illustration on page 4. If you prefer FRP louvers, see option on page 18.

□ □ □

The access doors on other towers may be unreasonably small. Specifying the size of the door will cause those bidders to take exception, alerting you to a potential maintenance headache.

See illustrations on pages 3 and 4.

Series 15 Cooling Tower

Specifications

10.2 The top of the tower shall be equipped with a sturdy 42" high wood guardrail system—top rails, intermediate rails and toeboards—conforming to OSHA standards. Posts shall be 3" x 4", on no greater than 6'-0" centers. Guardrails shall be 2" x 4".

10.3 One endwall of the tower shall be equipped with a 20" wide aluminum vertical ladder, through-bolted to the endwall structure. Ladder shall rise from the cold water basin level to the top of the fan deck guardrail, and shall be designed and installed in conformance with OSHA standards.

11.0 Cold Water Basin:

11.1 The cold water collection basin shall be of poured-in-place concrete, provided under the General Contractor's scope of work. The concrete basin design shall be based upon certified loads and dimensions provided by the cooling tower manufacturer.

12.0 Scope of Work:

12.1 The cooling tower manufacturer shall be responsible for the design, fabrication, and delivery of materials to the project site, and for the erection of the tower over supports provided by others. Unless otherwise specified, all external piping, pumps, controls, and electrical wiring will be outside the cooling tower manufacturer's scope of work.

Specification Value

Good maintenance practice requires periodic access to the top of the tower to inspect the distribution basins, as well as the structural integrity of the fan deck, fan cylinder, and fan—especially the fan blade securing hardware. **And there are no induced-draft cooling tower designs that are immune to this need!**

For the comfort and safety of your operating personnel, the Series 15 includes a ladder and guardrail of the quality and design indicated—and we strongly recommend that you **require it of all bidders!** Portable ladders and other "make-do" access means are inappropriate for equipment of this size and complexity.

See illustrations on pages 3 and 4.

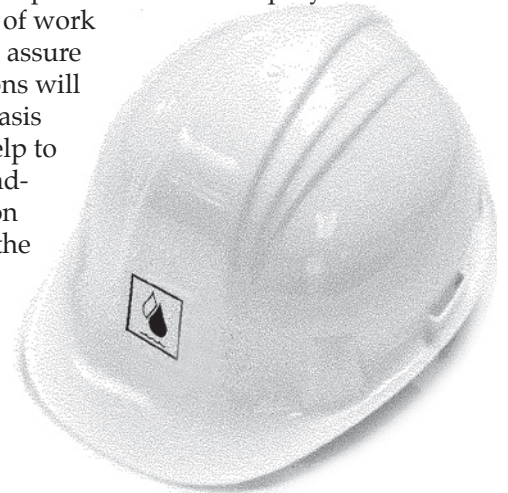


□□□

This basic specification assumes that the tower will be erected over a concrete basin at grade level. If the tower is to be installed on an elevated supporting platform, the plywood cold water collection basin indicated on page 16 should be included in the specifications.

□□□

Please be clear in your specifications and inquiry documents regarding the full scope of work expected. That will help assure that your bid comparisons will be made on as equal a basis as possible—and will help to avoid any misunderstandings during the execution and implementation of the contract.



Options

Specifications

Specification Value

Control Options

Control System:

Para. 5.7: Add the following paragraph in the Mechanical Equipment section:

Each cell of the cooling tower shall be equipped with a UL listed control system in a NEMA 3R or 4X outdoor enclosure capable of controlling single-speed or two-speed motors as required, and designed specifically for cooling tower applications. The panel shall include a main fused disconnect with an external operating handle, lockable in the off position for safety. Across-the-line magnetic starters or solid state soft-start starters as required shall be controlled with a thermostatic or solid state temperature controller. Door mounted selector switches shall be provided to enable automatic or manual control and wired for 120VAC control. Control circuit to be wired out to terminal blocks for field connection to a remote vibration switch and for access to extra 120VAC 50VA control power, overload trip alarms and remote temperature control devices. The temperature controller shall be adjustable for the required cold water temperature. If a thermostatic controller is used it shall be mounted on the side of the tower with the temperature sensing bulb installed in the cold water basin using a suspension mounting bracket. If a solid state temperature controller is used the controller will be door mounted on the control panel. The temperature controller will display two temperatures, one for outgoing water and the other for set point. Water temperature input shall be obtained using a three-wire RTD with dry well in the outlet water piping and wired back to the solid state temperature controller in the control panel.

Basin Heaters:

Para. 11.2: Add the following paragraph in the Cold Water Basin section: Provide a system of electric immersion heaters and controls for each cell of the tower to prevent

□ □ □

If it is your opinion that the control system for the cooling tower should be part of the tower manufacturer's responsibility, we are in wholehearted agreement with you. Who better to determine the most efficient mode and manner of a tower's operation—and to apply a system most compatible with it—than the designer and manufacturer of the cooling tower?

□ □ □

The basin heater components described at left represent our recommendation for a reliable automatic system for the prevention of basin freezing.

Options

Specifications

freezing of water in the collection basin during periods of shutdown. The system shall consist of one or more stainless steel electric immersion heaters installed in a galvanized steel heat shield provided in the floor of the basin. A NEMA 4 enclosure shall house a magnetic contactor to energize heaters; a transformer to provide 24 volt control circuit power; and a solid state circuit board for temperature and low water cutoff. A control probe shall be located in the basin to monitor water level and temperature. The system shall be capable of maintaining 40°F water temperature at an ambient air temperature of ____ °F. Wiring of the heaters and controls shall be the responsibility of the purchaser.

Variable Speed Drive:

Para. 5.7: Add the following paragraphs in the Mechanical Equipment Section: A complete UL listed Variable Speed Drive system in a NEMA 12 indoor or NEMA 3R outdoor enclosure shall be provided. The VFD shall use PWM technology with IGBT switching and integrated by-pass design. The panel shall include a main disconnect with short circuit protection and external operating handle, lockable in the off position for safety. The system shall include a solid state, PID temperature controller to adjust frequency output of the drive in response to the tower cold water temperature. The temperature of the cold water and set point shall be displayed on the door of the control panel. The by-pass circuit shall include a complete magnetic bypass that isolates the VFD when in the bypass mode. Transfer to the bypass mode shall be automatic in the event of VFD failure or for trip faults. The bypass contactor shall be cycled on and off while operating in bypass, to maintain the set-point temperature of the cold water. The drive design shall be operated as a stand-alone system or controlled with a building automation system. The BAS can be the normal source of control and the

more 

Specification Value

If aggressive operating conditions are anticipated, change “galvanized” in paragraph 11.2 to “Series 300 SS”.

The ambient air temperature that you fill in should be the lowest 1% level of winter temperature prevalent at site.

Ask for Marley drawing 92-3627.

□ □ □

Marley VFD drive systems are designed to combine absolute temperature control with ideal energy management. The cooling tower user selects a cold water temperature and the drive system will vary the fan speed to maintain that temperature. Precise temperature control is accomplished with far less stress to the mechanical equipment components. The improved energy management provides fast payback. Indeed, many utilities offer generous rebates for users having installed VFD drives.

Options

Specifications

integrated temperature controller may be used as a backup to the building automation system.

Operator controls shall be mounted on the front of the enclosure and shall consist of start and stop control, bypass/VFD selector switch, Auto/Manual selector switch, manual speed control, and solid state temperature controller. An emergency bypass selector switch internal to the panel allowing the cooling tower fan motor to be run at full speed shall be furnished.

To prevent heating problems in the cooling tower fan motor and to assure proper gear reducer lubrication the VFD system shall cycle the motor on/off when the minimum allowable motor speed is reached.

The cooling tower manufacturer shall supply VFD start-up and tower vibration testing to identify and lock out any vibration levels which may exceed CTI guidelines.

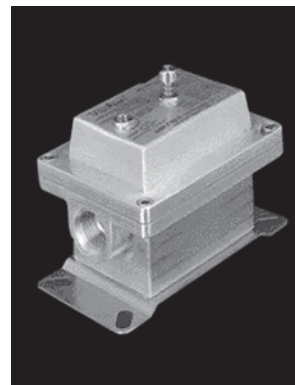
Vibration Limit Switch:

Para. 5.8: Add the following paragraph in the Mechanical Equipment section: A single-pole, double-throw vibration limit switch in the NEMA 4 housing shall be installed on the mechanical equipment support for wiring into the owner's control panel. The purpose of this switch will be to interrupt power to the motor in the event of excessive vibration. It shall be adjustable for sensitivity, and shall require manual reset.

Specification Value

□ □ □

Unless specified otherwise, a Metrix switch will be provided. Double-pole, double-throw models are also available. If purchased in conjunction with the Control System, it is also factory-wired. The requirement for manual reset assures that the tower will be visited to determine the **cause** of excess vibration.



Options

Specifications

Convenience and Safety Options

Stairway:

Para. 10.3: Replace this paragraph with the following: A 30" wide, column supported, 45° stairway with 8" rise and run of treated Douglas Fir shall be provided at the tower endwall rising from grade (roof) to the fan deck elevation. Stair columns shall be 3" x 4". Guardrails shall be 2" x 4". The upper guardrail shall have an eased edge for the protection of operating personnel. Stairway foundation shall be by others, designed in accordance with drawings provided by the cooling tower manufacturer. The stairway shall conform to OSHA standards.

Plenum Walkway:

Para. 10.1: Add the following to the end of this paragraph: Provide a 24" wide walkway extending from one endwall access door to the other through the length of the tower. Walkway shall be constructed of treated Douglas Fir, and the top of the walkway shall be above the cold water basin overflow level. If the cold water basin is deeper than 4'-0", the walkway shall be equipped with guardrails.

Ladder Extension:

Para. 10.4: Add the following paragraph in the Access and Safety section: Provide a ladder extension for connection to the base of the ladder attached to the tower casing. This extension shall be long enough to rise from the roof (grade) level to the base of the tower. Anchorage and lateral bracing of the ladder extension shall be by others.

Ladder Safety Cage:

Para. 10.3: Add the following to the end of this paragraph: A heavy gauge galvanized steel safety cage shall surround the ladder, extending from a point approximately 7'-0" above the base of the ladder to the top of the guardrail surrounding the fan deck.

Specification Value

□ □ □

Although they are not necessary for routine operation and maintenance, stairways do provide a safe and comfortable means of access to the top of the tower that is often overlooked in the initial cooling tower purchase.



□ □ □

This option permits freedom of movement for inspection or maintenance within the tower without the need for wading boots or tower drainage. It also helps prevent maintenance personnel from damaging submerged accessories in the cold water basin (such as screens, probes, basin heaters, etc.).

□ □ □

Many towers are installed such that the base of the tower is 2'-0" or more above the roof or grade level. This makes it difficult to get up to the base of the attached ladder. The ladder extension alleviates this problem. Marley ladder extensions are available in standard 5'-0" and 11'-0" lengths, and will be field-cut to fit.

□ □ □

To meet OSHA guidelines, towers whose fan decks are 20'-0" or more above roof or grade, and which are equipped with ladders, are required to have safety cages surrounding the ladders.

Options

Specifications

Oil Level Sight Glass:

Para. 5.4: Replace this paragraph with the following: A galvanized oil gauge and drain line shall extend from the gear reducer to the outside of the fan cylinder, and shall be equipped with a bronze-bodied oil level sight glass.

Miscellaneous Options

Wood Cold Water Basin:

Para. 11.1: Replace this paragraph with the following: Include a cold water collection basin constructed of pressure treated Douglas Fir plywood. Basin floor shall be 3/4" thick, 5-ply, supported by 6" deep joists on 2'-0" centers. Basin sides shall be 1" thick, 7 ply. The basin floor shall lock into a dado groove in the basin sides to form a watertight seal. A depressed, side outlet sump of hot-dip galvanized steel having a 1/4" thick faceplate drilled for a standard class 125 ASME flange connection will be included. An appropriately sized (3" diameter or larger) galvanized standpipe overflow shall be provided. The standpipe shall be removable for flush-out cleaning of the basin. A float-operated, mechanical makeup valve shall also be included, installed adjacent to the endwall access door.

PVC Fill Splash Bars:

Para. 6.1: Change 2nd sentence to read as follows: Splash bars shall be hollow, extruded, structural bars of PVC, a minimum of 3/4" thick x 1-5/8" wide x 4'-0" long.

Redwood Components:

Specification Value

□ □ □

The oil level sight glass is a convenience item that is preferred by many users. The same purpose is, of course, served by either the dip stick or the sight glass.

If aggressive operating conditions are anticipated, change "galvanized" in paragraph 5.4 to "Series 300 stainless steel".

□ □ □

Marley basins are used to permit the installation of towers on elevated platforms or foundations. The cross section illustration on page 4 shows the relationship of the optional basin, sump and overflow to a typical steel I-beam support platform.



See illustrations on pages 3 and 4.

□ □ □

Extruded PVC has a smooth, nonporous surface which naturally resists the adherence of slime, algae, biological growth, and turbidity. It also, of course, has a much better fire rating than does wood. **PVC splash bars can produce a different level of thermal performance than wood. Make sure that the model you have selected takes this into account.**

□ □ □

Most of the wood components in the tower are available of pressure treated redwood. However, redwood lacks the strength of Douglas Fir, which may require structural modifications of the tower. Please discuss the available redwood options with your local Marley representative.

Options

Specifications

Hot Water Basin Covers:

Para. 8.3: Add the following paragraph in the Hot Water Distribution System section: The distribution basins shall include treated Douglas Fir plywood covers at least 3/4" thick. These covers shall be designed to withstand 40 psf live load, and shall be easily removable for maintenance.

Air Inlet Screens:

Para. 9.2: Add the following paragraph in the Casing and Louvers section: The air inlet faces of the tower shall be covered by 1" mesh hot-dip galvanized welded wire screens. Screens shall be secured to removable treated Douglas Fir frames.

Watertight Partitions Between Cells:

Para. 3.5: Replace the last sentence in this paragraph with the following: Partitions shall be 3/4" x 5-ply, factory-fabricated, grooved and splined treated Douglas Fir plywood sheets; and shall be full height, full width of the tower, installed and sealed watertight to permit separate cell operation.

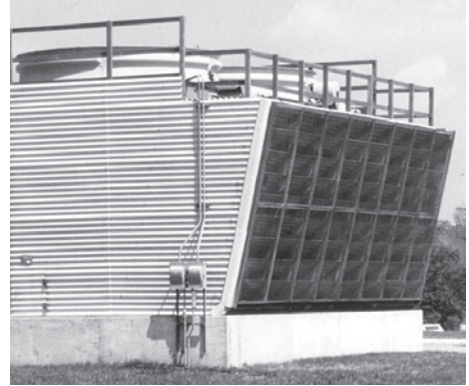
FRP Louvers:

Para. 9.2: Replace this paragraph with the following: The air intake faces of the tower shall be louvered full length, full height. Louvers shall be corrugated FRP, supported on no more than 4'-0" centers. They shall be slip-fit into slots in the louver column assemblies. Louvers shall be sloped to shed water inward to the tower, and shall be "sight-tight" at horizontal view.

Specification Value

□□□

These covers are designed to keep leaves and debris out of the circulating water system. They also serve to suppress algae formation by shielding the incoming hot water from direct sunlight.



□□□

In wooded or windy areas, these screens help to keep leaves or blowing debris out of the cooling tower and circulating water system.

□□□

In addition to the normal partition function of preventing air bypass (page 6), this option allows you to use each partitioned cell of your tower independently. This is valuable where a single multicell tower is serving several separate systems—or where winter operation may require less than full tower capability

□□□

This option is not recommended in those northern regions where heavy ice and snow loads can occur.

Options

Specifications

Low Noise Tower:

Para. 1.1: Add the following at the end of this paragraph: The cooling tower shall be quiet operating, and shall produce an overall level of sound no higher than _____ dBA at the critical location indicated on the Plans.

Specification Value

□ □ □

Sound produced by a Series 15 tower operating in an unobstructed environment will meet all but the most restrictive noise limitations—and will react favorably to natural attenuation. Where the tower has been sized to operate within an enclosure, the enclosure itself will have a damping effect on sound. Sound also declines with distance—by about 5 or 6 dBA each time the distance doubles. Where noise at a critical point is likely to exceed an acceptable limit, you have several options—listed below in ascending order of cost impact:

- Where only a slight reduction in noise will satisfy—and the source of concern is in a particular direction—merely turning the tower may be the answer. Less sound emanates from the cased face of the tower than does from the air intake face.
- In many cases, noise concerns are limited to nighttime, when ambient noise levels are lower and neighbors are trying to sleep. You can usually resolve these situations by using two-speed motors in either 1800/900 or 1800/1200 RPM configuration; and operating the fans at reduced speed **without cycling** “after hours”. (The natural nighttime reduction in wet-bulb temperature makes this a very feasible solution in most areas of the world, but the need to avoid cycling may cause the cold water temperature to vary significantly.)
- Variable speed drives automatically minimize the tower's noise level during periods of reduced load and/or reduced ambient without sacrificing the system's ability to maintain a constant cold water temperature. This is a relatively inexpensive solution, and can pay for itself quickly in reduced energy costs.
- Where noise is a concern at all times (for example, near a hospital), the best solution is to oversize the tower so it can operate continuously at reduced (1200 or 900 RPM) motor speed even at the highest design wet-bulb temperature. Typical sound reductions are 7 dBA at $\frac{2}{3}$ fan speed or 10 dBA at $\frac{1}{2}$ fan speed, but larger reductions are often possible.
- Extreme cases may require inlet and discharge sound attenuator sections; however, the static pressure loss imposed by attenuators may necessitate an increase in tower size. This is the least desirable approach because of the significant cost impact—and because of the obstruction to normal maintenance procedures.

Your Marley representative can help you meet your sound requirements.

Options

Specifications

Fire Safety Options

Specification Value

□ □ □

Occasionally, critical processes or local codes may require you to install a fire-protection sprinkler system on a wood tower—or pay higher insurance premiums—or both. An alternative that could be acceptable to your insurance carrier, and which you may wish to evaluate, would be to make your Series 15 tower as fire resistant as possible. This can be done by any or all of the following measures:

- FRP casing having a flame spread rating of 25 or less. (Para. 9.1)
- Fan cylinders of fire-retardant FRP having a flame spread rating of 25 or less. (Para. 4.2)
- ¼"thick fireproof fiber reinforced cement overlay over the fan deck—and FRC overlaid distribution basin covers. (Para. 4.1 & page 17)
- ¾" thick plywood partitions both sides of the column line between cells to achieve a fire rating of at least 30 minutes. (Para. 3.5. & page 17)
- PVC fill splash bars as described on Page 16.



SPX **Cooling Technologies**

Balcke | Hamon Dry Cooling | Marley

7401 W 129 Street

Overland Park, KS USA 66213

+1 913 664 7400

spxcooling@ct.spx.com

www.spxcooling.com

In the interest of technological progress,
all products are subject to design and/or
material change without notice.

©2007 SPX Cooling Technologies, Inc.

Printed in USA | SPEC 15-07