

SPX[®]



Marley NX[™]

fiberglass cooling tower

setting the pace
for a growing world

> Marley



the NX: pace-setting performance

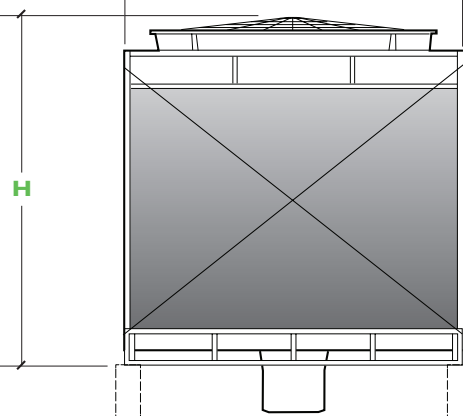
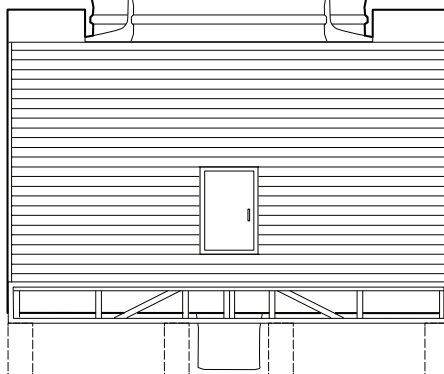
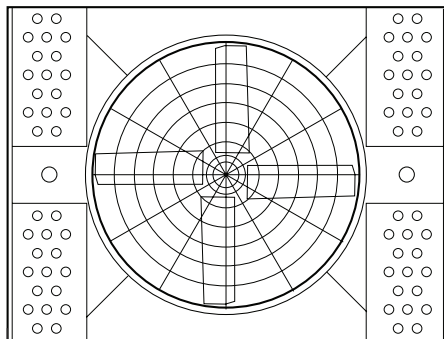
As global industries grow, their thermal cooling needs are growing with them. The widely varied climates and high-demand applications of these markets are not the place for questionable technology or inferior quality. So Marley is proud to introduce the Marley® NX — a cooling tower designed specifically for expanding markets, and optimized for smaller tonnage applications. Leveraging decades of global cooling tower experience, the Marley NX tower excels as other cannot — offering the innovation, performance, and durability that high-growth industry demands. And every NX unit is backed by the integrity, reliability, and quality that is uniquely Marley ... for a price that may surprise you.



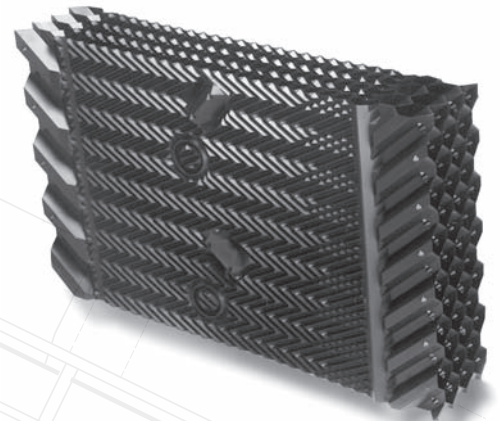
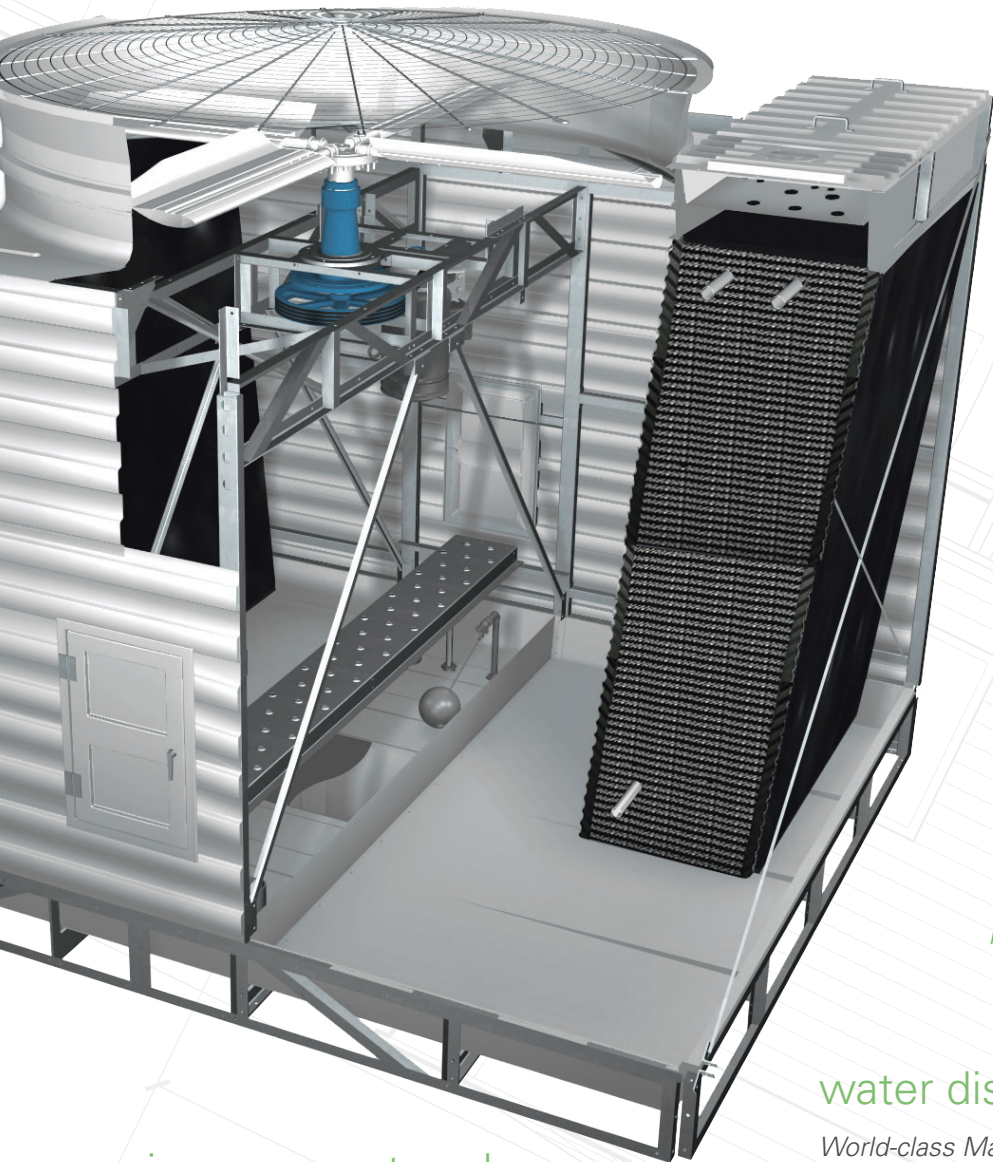
uniquely
designed for
unique
global
markets



Model	Nominal Capacity tons	Dimensions mm		
		L	W	H
NX1010K-1	120	1728	3244	3225
NX1010M-1	140	1728	3244	3225
NX1010N-1	156	1728	3244	3225
NX1010P-1	175	1728	3244	3225
NX1015K-1	182	2522	3860	3302
NX1015M-1	202	2522	3860	3302
NX1015N-1	223	2522	3860	3302
NX1015P-1	252	2522	3860	3302
NX1020N-1	243	2808	4130	3528
NX1020P-1	274	2808	4130	3528
NX1020Q-1	304	2808	4130	3528
NX1025N-1	304	3494	4504	3548
NX1025P-1	343	3494	4504	3548
NX1025Q-1	379	3494	4504	3548



H



Marley High-Efficiency MX Film-Fill



Marley "Spiral Target" Nozzle

air movement package

More airflow for greater efficiency.

- High-Efficiency Fan – strong aluminum alloy with adjustable-pitch blades and specialized TEAO motor
- Fan Guard – welded heavy-gauge rods, hot-dip galvanized after fabrication
- Eased Inlet Fan Cylinder – assures full-area, low-turbulent airflow through cylinder
- Durable Bearing Housing – cast housing assures proper shaft alignment and minimizes belt slippage

structure

Thoughtful, purpose-built design.

- Quality Materials – utilizes FRP and hot-dip galvanized steel frame for added strength and fiberglass panels for superior corrosion resistance
- Crossflow Configuration – makes maintenance simpler and safer than other designs
- Large Access Door – allows safer, non-confining and more efficient visual inspections of cold water basin, internal structure, drift eliminators and mechanical equipment in the plenum area
- Field Assembled – simplifies transportation to job sites

water distribution system

World-class Marley engineering.

- Marley MX Thermoformed PVC Film Fill – designed to keep circulating water confined to fill area, maximize water contact with airflow, and minimize icing conditions
- High Performance Marley Spiral-Target Nozzles – durable polypropylene design for easy maintenance and reduced clogging
- Simplified Flangeless Inlet – a universal custom-fit piping outlet for easier adaptation to any pipe standard
- Gravity-Flow Distribution – allows for easy, nonrestrictive maintenance while operating

harness the global power of marley – start to finish

For years, the Marley brand has been synonymous with innovation and quality. As part of SPX Cooling Technologies fully integrated approach to cooling tower system design, manufacturing, and testing, Marley equipment is crafted to perform as few others can. Plus, you can be assured that all Marley products will provide consistently high-quality, reliable performance, competitive pricing, and superior results.



In addition to a full-line of leading-edge cooling tower products, SPX Cooling Technologies offers you comprehensive services, including:

- Complete design engineering
- International construction
- Thermal enhancement upgrades
- Parts & maintenance
- Repair
- Tower reconstruction

The background of the page features a detailed technical drawing of a cooling tower tower section. The drawing is rendered in light gray lines and shows the internal structure, including the fan area at the top, the fill section, and the water distribution system. The drawing is oriented vertically, with the top of the tower at the top of the page.

vibration-resistant design

Decades of design and manufacturing experience allow Marley to engineer a sturdy, robust structure while minimizing operational vibration levels that could adversely impact efficiency and stability.

long-life construction

Corrosion-resistant materials such as hot-dip galvanized steel and fiberglass ensure your NX tower meets the high-demand needs of your HVAC and light industrial applications — plus outstanding value!

certified performance

Offering exceptional thermal performance, the NX design is certified by GB/T 7190.1-2000. And since it's a Marley, you can be confident it will provide you with years of reliable service.

low operating cost

Thanks to Marley high-efficiency fill and fans, gravity-flow water distribution and active spray nozzles, and precision drive systems, the NX offers maximized cooling with minimized power consumption.

all-climate flexibility

From blistering heat to icy cold and everything in between, the NX is designed to meet the rigorous, changing, and varied climates of global markets, while providing simple maintenance.



SPX[®]

SPX COOLING TECHNOLOGIES
UNIT 505, BLOCK B
PHILEO DAMANSARA 2
NO. 15 JALAN 16/11
OFF JALAN DAMANSARA
46350 PETALING JAYA, MALAYSIA
60 3 7947 7800
spxcooling.asiapacinfo@spx.com
spxcooling.com

In the interest of technological progress,
all products are subject to design and/or
material change without notice.
©2011 SPX | [sea_NX-11A](#)