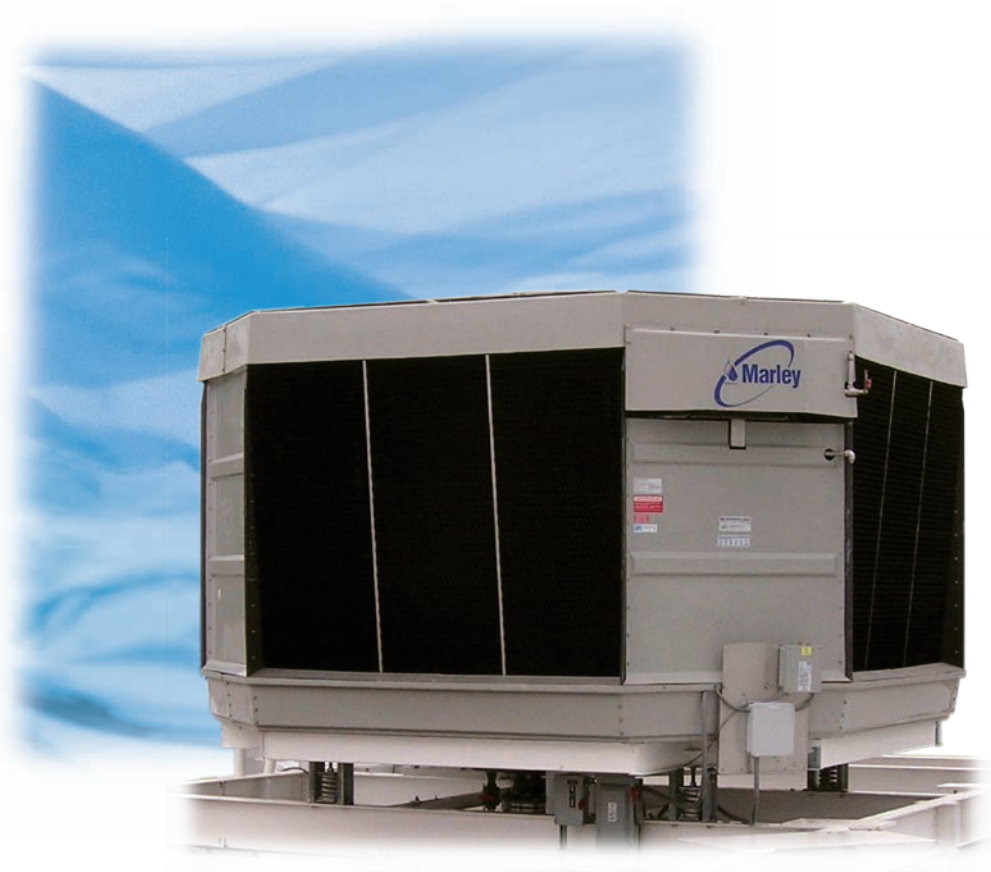


*/ **QuadraFlow** Cooling Tower /*

Engineering Data & Specifications



Engineering Data

Schematic	5
Support	5
Freeze Prevention	13
Environmental	14
Application	15

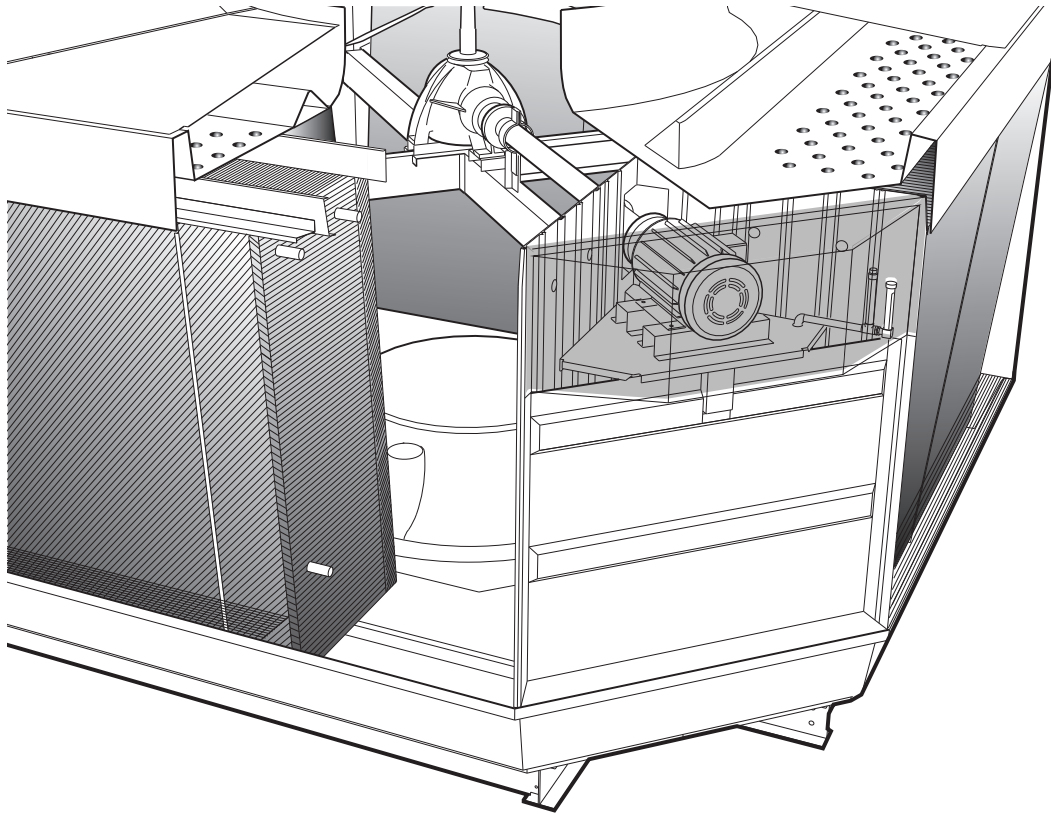
Specifications / Base

Base	16
Thermal Performance	16
Performance Warranty	16
Construction	17
Fill, Louvers and Drift Eliminators	18
Mechanical Equipment	19
Hot Water Distribution System	20
Casing, Top Deck and Fan Cylinder	20
Cold Water Collection Basin	20
Warranty	21
Scope of Work	21

Specifications / Options

Control Options

Control System	22
Vibration Limit Switch	23
Basin Heater	23
Variable Speed Drive	25



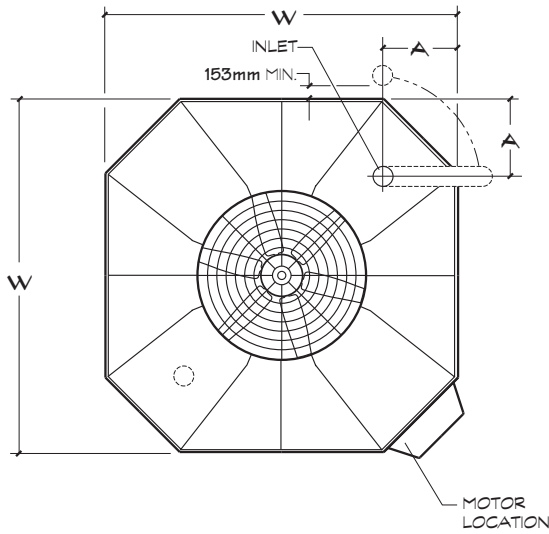
The Marley QuadraFlow® is a molded fiberglass, factory fabricated, field erected, general purpose crossflow cooling tower, designed to serve all normal cooling water systems—as well as those systems whose water quality would jeopardize the life expectancy of a galvanized cooling tower. In some locations, the quality of the circulating water is very poor. This can be because of the character of the makeup water (brackish, acidic, alkaline, etc.), or because of contamination by the product being cooled. In many cases, it is because of poor air quality at the site. Cooling towers being ideal air washers, the cooling tower water soon mimics the quality of the air.

The left hand column of pages 15 thru 23 provides text for the various specification paragraphs, whereas the right hand column comments on the meaning of the subject matter and explains its value.

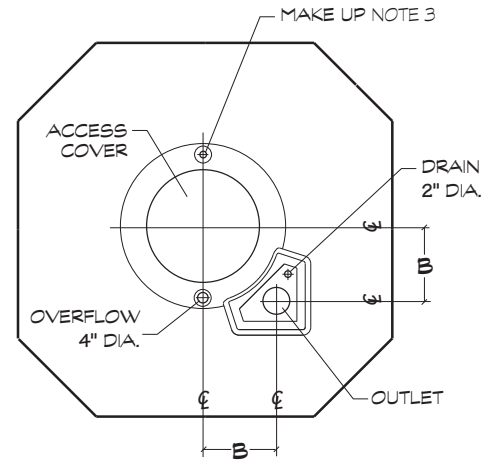
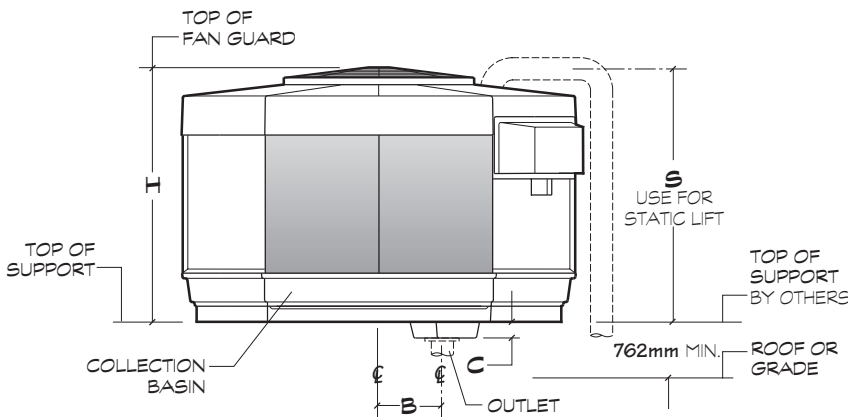
Pages 15 thru 20 indicate those paragraphs which will result in the purchase of a tower that will not only accomplish the specified thermal performance, but will include normal operation and maintenance enhancing features. Also on these pages are paragraphs intended to add those features and components that will customize the tower to meet the user's requirements.

Space does not permit definition and explanation of all the possible options that can be applied to the QuadraFlow. We realize that you, the purchaser, must be happy with the tower and its characteristics, and we are prepared to provide—or provide for—any reasonable enhancement that you are willing to define and purchase.

Your needs will become part of the continuing evolution of this Marley product line.



Model	Nominal Tons note 2	Dimensions						Motor kW	Inlet note 5	Outlet note 8
		W	H	S	A	B	C			
21120	129-183	3864	2178	2194	867	732	105	3.7-11.2	8"	10"
21220	186-211	3864	2565	2580	867	732	105	7.5-11.2		
21320	204-256	3864	2978	2991	867	732	105	7.5-14.9		
22120	243-304	4283	2597	2596	802	835	181	7.5-14.9	10"	12"
22220	312-425	4283	3010	3007	802	835	181	11.2-29.8		
23120	390-475	5083	3010	2988	979	835	227	14.9-29.8	2 @ 8"	14"
23220	419-548	5083	3423	3399	979	835	227	14.9-37.3		



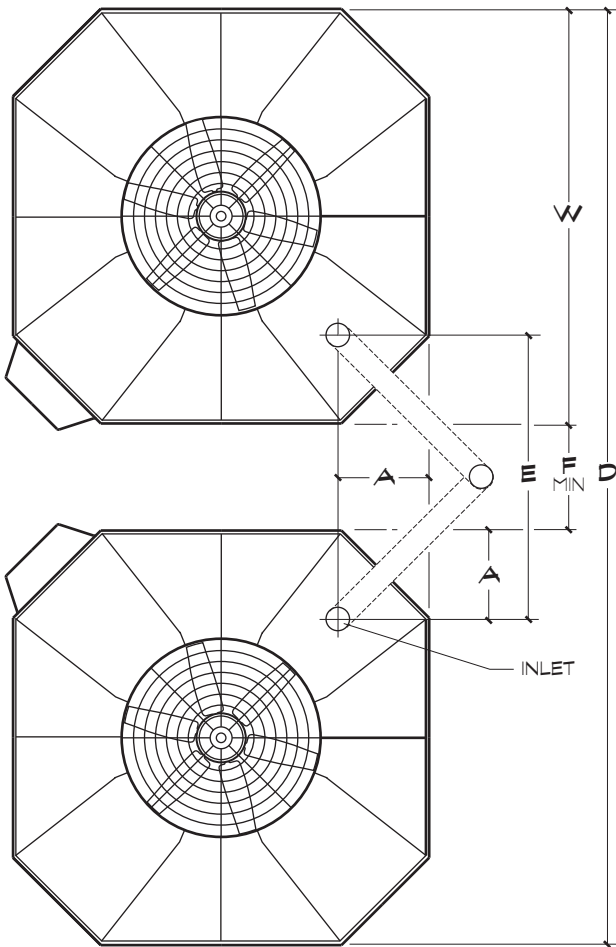
Use this data for preliminary layouts only. Obtain current drawing from your sales representative.

The Marley UPDATE web-based selection software – available at spxcooling.com – provides QuadraFlow model recommendations based on customer's specific design requirements.

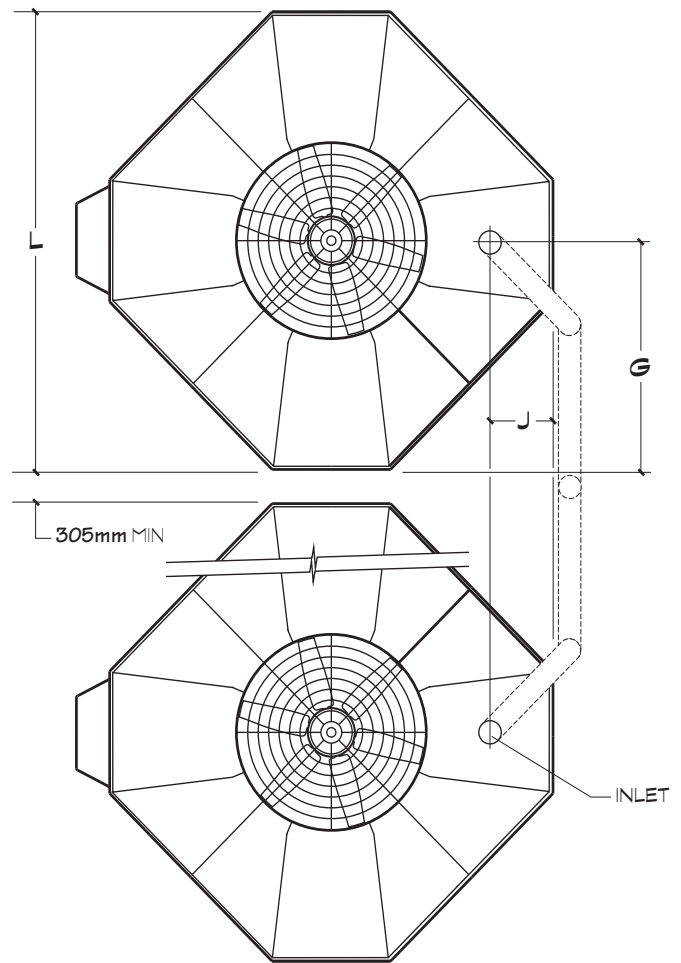
Model	Maximum Sump Capacities - m ³ /h				
	Outlet Diameter				
	6"	8"	10"	12"	14"
21000	100	175	276	–	–
22000	–	199	318	460	–
23000	–	218	341	495	593

NOTE

- Dimensions shown are for preliminary layout only. Obtain current engineering drawings or CAD files from your Marley sales representative for final layout.
- Nominal tons are based upon 35°C HW, 29.5°C CW, 25.5°C WB and .68 m³/hr per ton.
- Makeup connection may be 1" or 2" diameter, depending upon tower heat load, water pressure, and desired connections.
- All table data is per cell.
- 21000 and 22000 models require only one inlet per cell and inlet piping may be located at any of the four tower corners. 23000 models whose design m³/h is 460 or less may use a single 10" inlet. Above 460 m³/h, two 8" inlets are required, located 180° apart. Subtract 51mm from "S" dimensions. Locating inlet riser directly behind motor is not recommended due to restrictions placed on motor access and removal.
- All piping loads must be supported independent of tower.
- All piping and supports are by others.
- Outlet diameters shown are for maximum m³/h. Smaller outlet diameters may be appropriate.



PLAN-TWO CELL

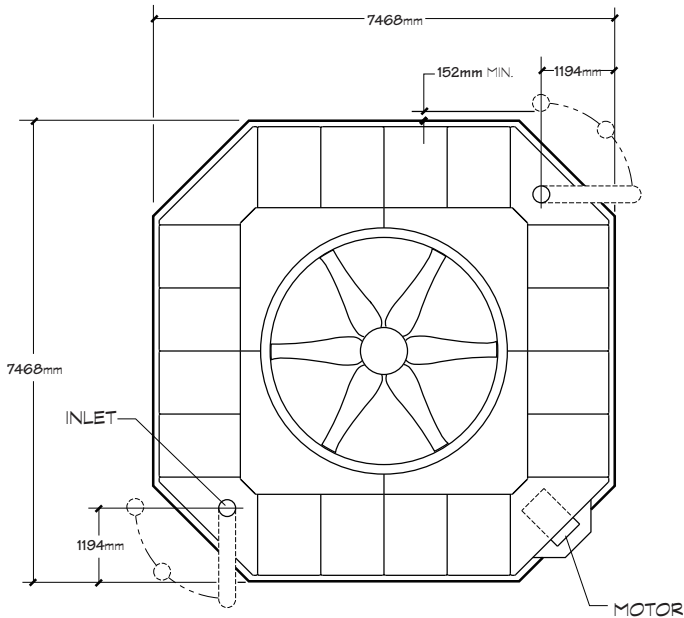


PLAN-MULTICELL

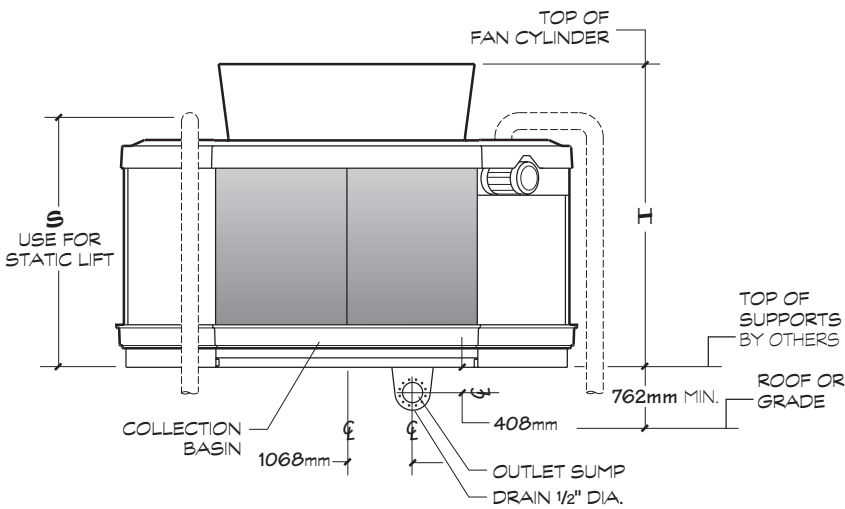
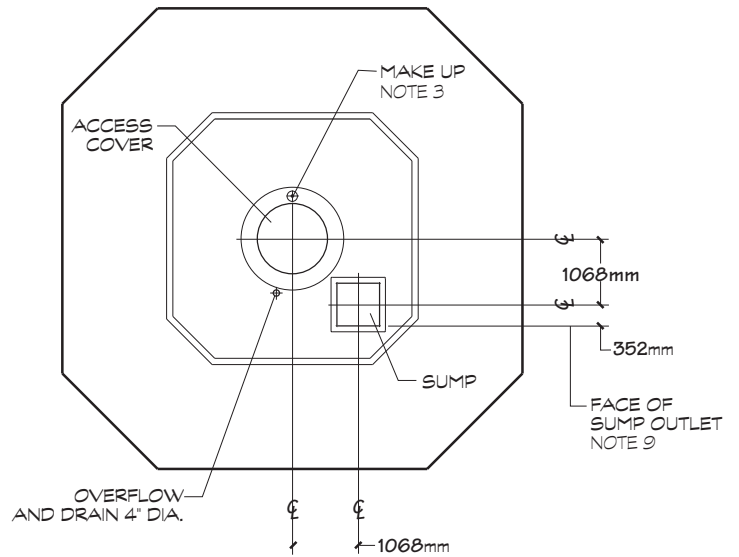
Two-cell installations may conform to either of the two schemes shown here. Choose the pattern that best fits into your available space.

The multicell scheme shown here applies to any number of cells. Contact your Marley sales representative for additional details if you prefer to use the scheme at the left for an installation of three or more cells.

Model	Dimensions							
	W	L	A	D	E	F	G	J
21120	3864	4312	867	8744	2750	1016	2156	649
21220	3864	4312	867	8896	2902	1168	2156	649
21320	3864	4312	867	9023	3029	1295	2156	649
22120	4283	4905	802	9862	2899	1295	2453	559
22220	4283	4905	802	10014	3051	1448	2453	559
23120	5083	5560	979	11640	3432	1473	2780	570
23220	5083	5560	979	11767	3559	1600	2780	570



Model	Nominal Tons note 2	Dimensions		Motor kW	Inlet
		H	S		
24120	531-836	3874	2951	11.2-44.8	2 @ 10"
24220	796-1047	4902	3980	18.7-44.8	



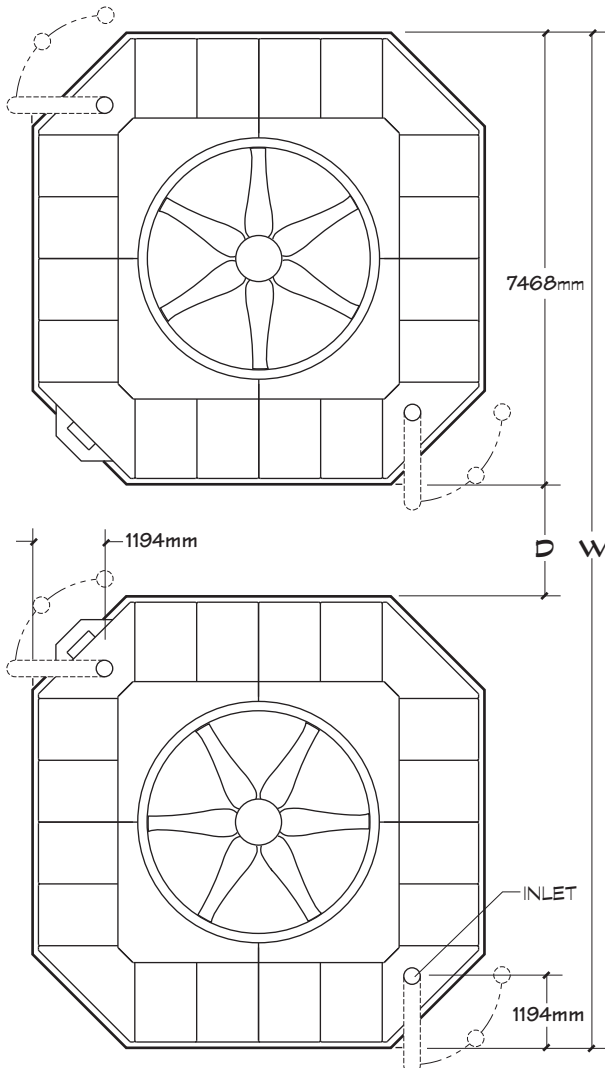
ELEVATION

Maximum Sump Capacities - m ³ /h			
Outlet Diameter			
8"	10"	12"	14"
352	556	795	965

For gravity flow applications, outlet piping must drop vertically out of tower a sufficient distance to overcome all head losses within outlet piping system.

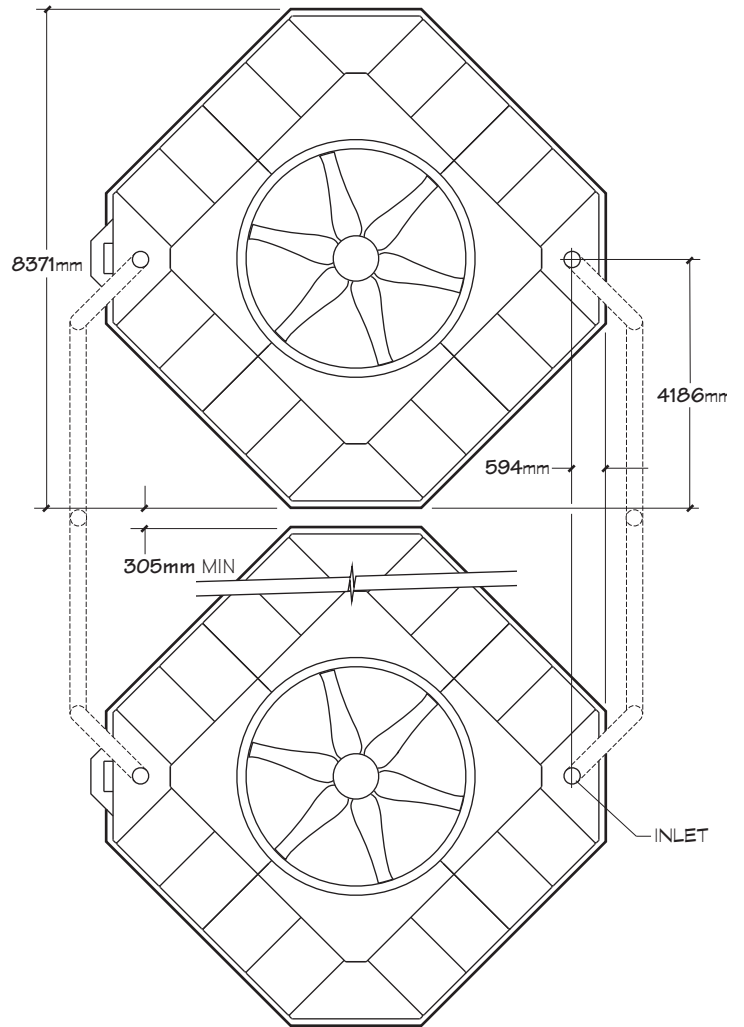
NOTE

- Dimensions shown are for preliminary layout only. Obtain current engineering drawings or CAD files from your Marley sales representative for final layout.
- Nominal tons are based upon 35°C HW, 29.5°C CW, 25.5°C WB and .68 m³/hr per ton.
- Makeup connection may be 1" or 2" diameter, depending upon tower heat load, water pressure, and desired connections.
- All table data is per cell.
- All piping loads must be supported independent of tower.
- All piping and supports are by others.
- Locating inlet riser directly behind motor is not recommended due to restrictions placed on motor access and removal.
- Outlet sump may be installed rotated 90° or 180° provided outlet piping will clear tower support.



PLAN-TWO CELL

Two-cell installations may conform to either of the two schemes shown here. Choose the pattern that best fits into your available space.



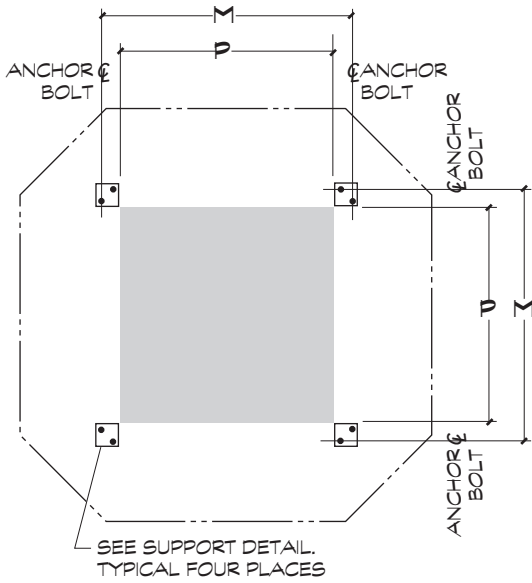
PLAN-MULTICELL

The multicell scheme shown here applies to any number of cells. Contact your Marley sales representative for additional details if you prefer to use the scheme at the left for an installation of three or more cells.

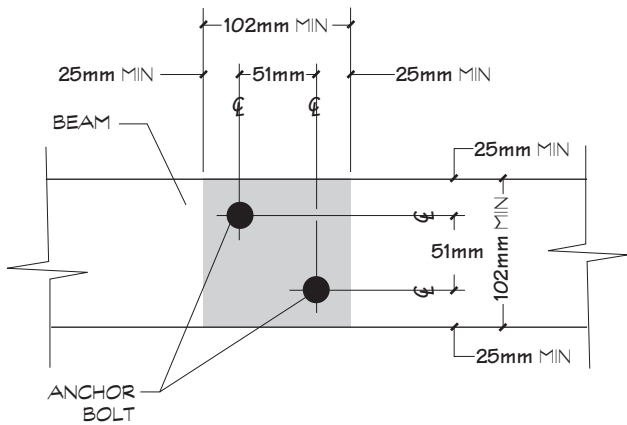
Use this data for preliminary layouts only. Obtain current drawing from your sales representative.

The Marley UPDATE web-based selection software – available at spxcooling.com – provides QuadraFlow model recommendations based on customer's specific design requirements.

Model	Dimensions	
	D	W
24120	1295	16231
24220	1727	16662

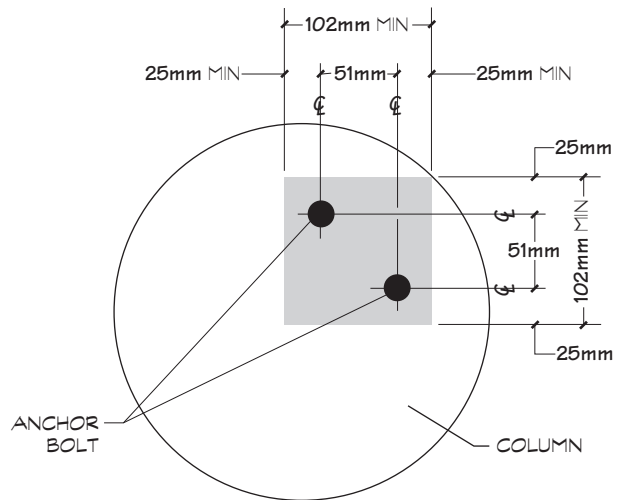


Model	Dimensions		Maximum Operating Wt./Cell kg	Maximum Operating Load at Anchor kg	Wind / Seismic Loads kg	
	M	P			Max. Vertical Reaction at Anchor	Max. Horiz. Reaction at Anchor
21120	2324	2172	4860	1331	301 / 1266	304 / 1215
21220			4997	1365	435 / 1607	366 / 1249
21320			5152	1416	604 / 1911	431 / 1288
22120	2746	2594	6532	1760	418 / 1587	411 / 1633
22220			6876	1934	580 / 2039	484 / 1719
23120	2861	2708	10190	2740	737 / 2742	488 / 2547
23220			10487	2833	844 / 3333	558 / 2622



BEAM SUPPORT DETAIL

Beam support option. 102mm by 120mm minimum bearing area to be provided by others at each anchor bolt location. Beam may be rotated 90°.

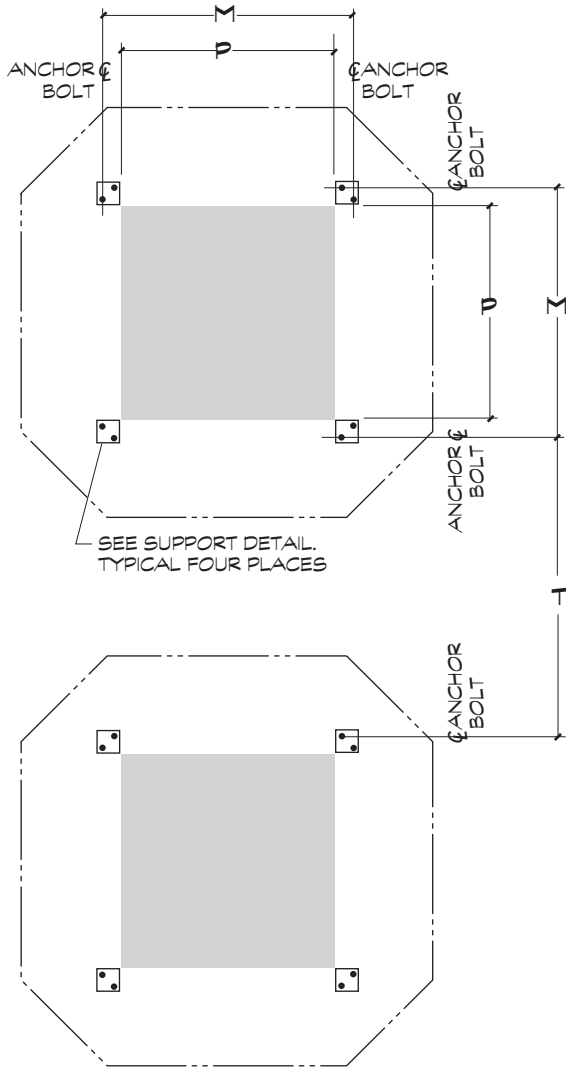


COLUMN SUPPORT DETAIL

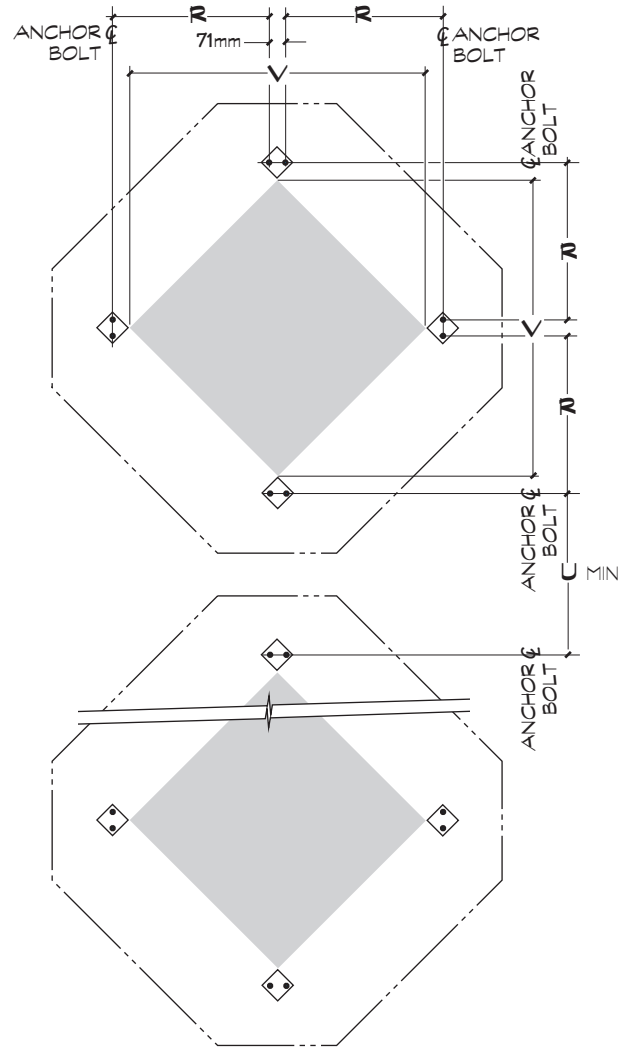
Column (pier) support option. 102mm by 102mm minimum bearing area to be provided by others at each anchor bolt location.

NOTE

- Dimensions and details shown are for preliminary layout only. Obtain current engineering drawings or CAD files from your Marley sales representative for final layout.
- The base of each QuadraFlow tower consists of a grid of galvanized steel beams as part of the tower assembly. Minimal additional support is required at the anchor bolt locations.
 - Additional support, design, construction, plus anchor bolt hardware by others.
 - 5/8" diameter anchor bolts are required. Projection of anchor bolts is 64mm maximum, 38mm minimum.
 - Anchor points must be framed flush and level at top. Maximum beam deflection to be 1/360 of span, not to exceed 13mm at anchor bolts.
- Maximum operating weight occurs with basin full to overflow level. Actual operating weight varies with m³/h and piping scheme. Operating water levels in excess of recommended levels can result in loads exceeding values shown.
- Consult your Marley sales representative for additional instructions if tower is to be supported directly on vibration isolators.
- Wind loads are based on 1.44 kPa and are additive to operating loads. Reactions due to seismic loads are calculated on the basis of a 1g lateral load and are additive to operating loads.

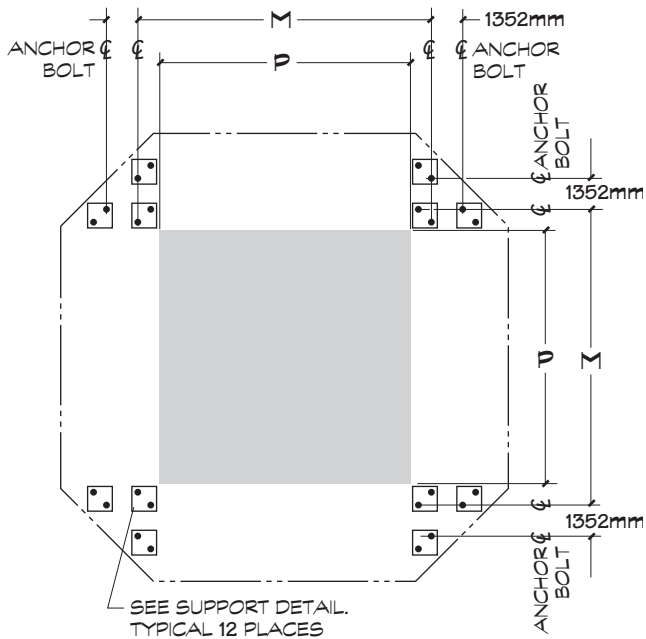


SUPPORT PLAN-TWO CELL

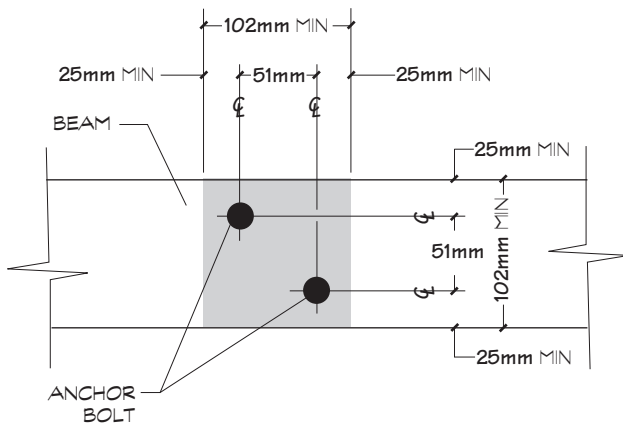


SUPPORT PLAN-MULTICELL

Model	Dimensions					
	M	P	R	V	T	U
21120	2324	2172	1572	3070	2556	1402
21220	2324	2172	1572	3070	2708	1402
21320	2324	2172	1572	3070	2835	1402
22120	2746	2594	1870	3664	2832	1399
22220	2746	2594	1870	3664	2985	1399
23120	2861	2708	1951	3826	3696	1891
23220	2861	2708	1951	3826	3823	1891

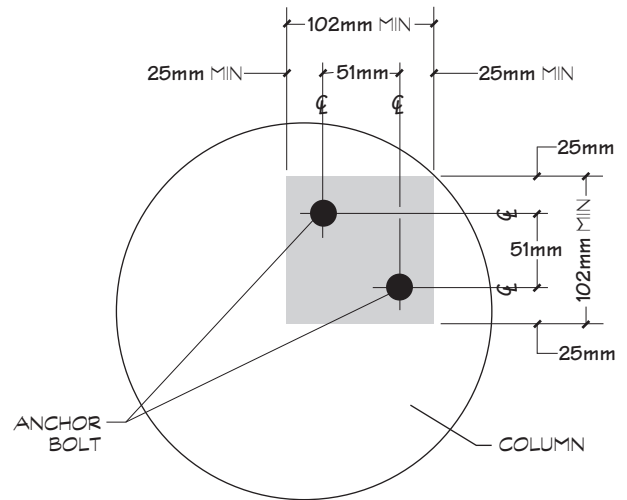


Model	Dimensions		Maximum Operating Wt./Cell kg	Maximum Operating Load at Anchor kg	Wind / Seismic Loads kg	
	M	P			Max. Vert. Reaction at Anchor	Max. Horiz. Reaction at Anchor
24121 - 24127	4296	4143	22147	3336	1855 / 6733	603 / 2654
24221 - 24225			22156	3452	3538 / 8985	823 / 2769



BEAM SUPPORT DETAIL

Beam support option. 102mm by 120mm minimum bearing area to be provided by others at each anchor bolt location. Beam may be rotated 90°.

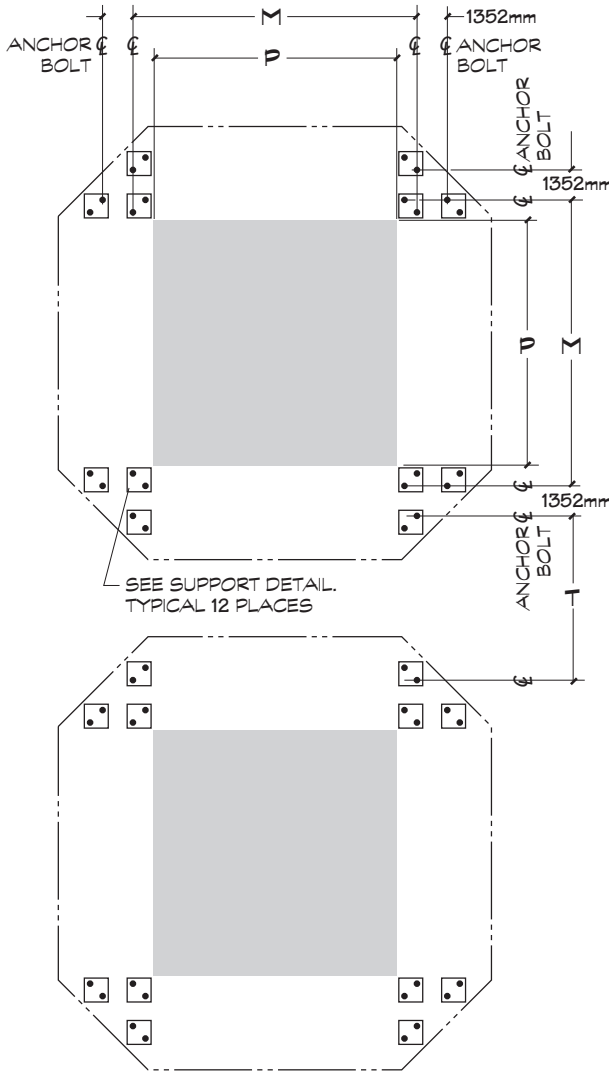


COLUMN SUPPORT DETAIL

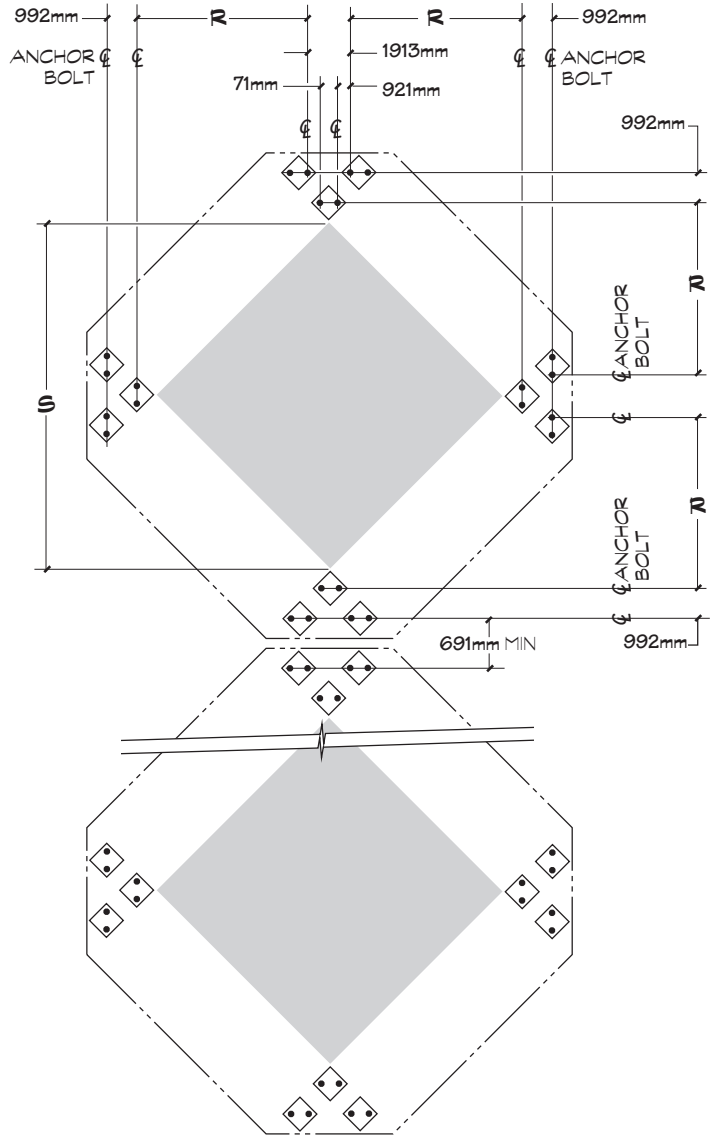
Column (pier) support option. 120mm by 120mm minimum bearing area to be provided by others at each anchor bolt location.

NOTE

- Dimensions and details shown are for preliminary layout only. Obtain current engineering drawings or CAD files from your Marley sales representative for final layout.
- The base of each QuadraFlow tower consists of a grid of galvanized steel beams as part of the tower assembly. Minimal additional support is required at the anchor bolt locations.
 - Additional support, design, construction, plus anchor bolt hardware by others.
 - 5/8" diameter anchor bolts are required. Projection of anchor bolts is 64mm maximum, 38mm minimum.
 - Anchor points must be framed flush and level at top. Maximum beam deflection to be 1/360 of span, not to exceed 13mm at anchor bolts.
- Maximum operating weight occurs with basin full to overflow level. Actual operating weight varies with m³/h and piping scheme. Operating water levels in excess of recommended levels can result in loads exceeding values shown.
- Consult your Marley sales representative for additional instructions if tower is to be supported directly on vibration isolators.
- Wind loads are based on 1.44 kPa and are additive to operating loads. Reactions due to seismic loads are calculated on the basis of a 1g lateral load and are additive to operating loads.



SUPPORT PLAN-TWO CELL



SUPPORT PLAN-MULTICELL

Model	Dimensions				
	M	P	R	S	T
24120	4296	4143	2045	5823	1864
24220					2296

When the ambient air temperature falls below 0°C, the water in a cooling tower can freeze. *Marley Technical Report #H-003 “Operating Cooling Towers in Freezing Weather”* describes how to prevent freezing during operation. Ask your Marley sales representative for a copy.

During shutdown, water collects in the cold water basin and may freeze solid. You can prevent freezing by adding heat to the water left in the tower—or, you can drain the tower and all exposed pipework at shutdown.

Electric Basin Heaters

An automatic basin water heater system is available, consisting of the following components:

- Stainless steel electric immersion heater(s) mounted on stainless steel plates on the floor of the collection basin.
- IP56 enclosure containing:
 - Magnetic contactor to energize heater.
 - Transformer to convert power supply to 24 volts for control circuit.
 - Solid state circuit board for temperature and low-water cutoff. Enclosure may be mounted on the side of the tower.
- Control probe in the collection basin to monitor water temperature and level.

Note: any exposed piping that is still filled with water at shutdown—including the makeup water line—should be electrically traced and insulated (by others).

Indoor Storage Tank

With this type of system, water flows from an indoor tank, through the load system, and back to the tower, where it is cooled. The cooled water flows by gravity from the tower to the tank located in a heated space. At shutdown, all exposed water drains into the tank, where it is safe from freezing.

Basin Heater kW Selection						
Ambient Temp °C	Model	Phase and Voltage				
		1/208	1/240	1/480	3/208	3/240
-1°	21000	3			3	
	22000	4.5			4.5	
	23000	6			6	
	24000	–			15	
-7°	21000	6			6	
	22000	6			6	
	23000	9			9	
	24000	–			21	
-12°	21000	7.5			7.5	
	22000	9			9	
	23000	–	–	12	12	
	24000	–			2@15	
-18°	21000	9			9	
	22000	–	–	12	12	
	23000	–			15	
	24000	–			2@18	
-23°	21000	–	–	12	12	
	22000	–			15	
	23000	–	2@9		2@9	
	24000	–			2@21 (2)	2@21
-29°	21000	–			15	
	22000	–	–	18	18	
	23000	–	–	2@12	2@12	
	24000	–			4@15 (2)	
-34°	21000	–			15	
	22000	–			18	
	23000	–	–	2@12	2@12	
	24000	–			–	–

Except where (2) is indicated, one set of controls will handle the required number of heaters. Where (2) is indicated, however, two sets of controls are required per cell.

Sound Control

Sound produced by a QuadraFlow tower operating in an unobstructed environment will meet all but the most restrictive noise limitations—and will react favorably to natural attenuation. Where the tower has been sized to operate within an enclosure, the enclosure itself will have a damping effect on sound. Sound also declines with distance—by about 5 dBA each time the distance doubles. Where noise at a critical point is likely to exceed an acceptable limit, several options are available—listed below in ascending order of cost impact:

- In many cases, noise concerns are limited to nighttime, when ambient noise levels are lower and neighbors are trying to sleep. You can usually resolve these situations by using two-speed motors and operating the fans at reduced speed without cycling “after hours”. The natural nighttime reduction in wet-bulb temperature makes this a very feasible solution in most areas of the world, but the need to avoid cycling may cause the cold water temperature to vary significantly.
- The Marley Variable Speed Drive automatically minimize the tower’s noise level during periods of reduced load and/or reduced ambient temperature without sacrificing the system’s ability to maintain a constant cold water temperature. This is a relatively inexpensive solution, and can pay for itself quickly in reduced energy costs.
- Where noise is a concern at all times—for example, near a hospital—the best solution is to oversize the tower so it can operate continuously at reduced (1200 or 900 RPM) motor speed. Typical sound reductions are 7 dBA at $\frac{2}{3}$ fan speed or 10 dBA at $\frac{1}{2}$ fan speed.
- Extreme cases may require inlet and discharge sound attenuator sections—however, the static pressure loss imposed by attenuators may necessitate an increase in tower size. This is the least desirable approach because of the significant cost impact—and because of the obstruction to normal maintenance procedures.

Your Marley sales representative will help you meet your sound requirements.

Enclosures

Occasionally, cooling towers are located inside architectural enclosures for aesthetic reasons. Although QuadraFlow towers adapt well to enclosures, the designer must realize the potential impact of a poorly arranged enclosure on the tower’s performance and operation. The designer must take care to provide generous air inlet paths, and the tower’s fan cylinder discharge height should not be lower than the elevation of the top of the enclosure. Obtain a copy of *Marley Technical Report #H-004 “External Influences on Cooling Tower Performance”* from your Marley sales representative.

As suggested in the aforementioned Technical Report, it may also be advisable to specify a design wet-bulb temperature .5°C higher than normal to compensate for potential recirculation initiated by the enclosure. You’ll benefit from discussing your project with your Marley sales representative.

System Cleanliness

Cooling towers are very effective air washers. Atmospheric dust able to pass through the relatively small louver openings will enter the circulating water system. Increased concentrations can intensify system maintenance by clogging screens and strainers—and smaller particulates can coat system heat transfer surfaces. In areas of low flow velocity—such as the cold water basin—sedimentary deposits can provide a breeding ground for bacteria.

In areas prone to dust and sedimentation, you should consider installing some means for keeping the cold water basin clean. Typical devices include side stream filters and a variety of filtration media.

Water Treatment

To control the buildup of dissolved solids resulting from water evaporation, as well as airborne impurities and biological contaminants including Legionella, an effective consistent water treatment program is required. Simple blowdown may be adequate to control corrosion and scale, but biological contamination can only be controlled with biocides.

An acceptable water treatment program must be compatible with the variety of materials incorporated in a cooling tower—ideally the pH of the circulating water should fall between 6.5 and 8.0. Batch feeding of chemicals directly into the cooling tower is not a good practice since localized damage to the tower is possible. Specific startup instructions and additional water quality recommendations can be found in the QuadraFlow User Manual which accompanies the tower and also is available from your local Marley sales representative. For complete water treatment recommendations, consult a competent, qualified water treatment supplier.

CAUTION

The cooling tower must be located at such distance and direction to avoid the possibility of contaminated tower discharge air being drawn into building fresh air intake ducts. The purchaser should obtain the services of a Licensed Professional Engineer or Registered Architect to certify that the location of the tower is in compliance with applicable air pollution, fire, and clean air codes.

Typical Applications

Although the QuadraFlow is a premium-value cooling tower targeted for those applications that demand a high degree of corrosion resistance—as well as an aesthetically pleasing appearance—it is routinely applied in virtually all normal systems requiring cold water for the dissipation of heat. Some common applications include:

- Condenser water service for air conditioning and refrigeration systems. The QuadraFlow is especially adapted to Free Cooling applications.
- Jacket water cooling for engines and air compressors.
- Chemical and industrial processes.
- Batch cooling.
- Welder cooling.
- Plastic industry processes.
- Dairy, citrus, and other food industry processing where water contamination is not likely to occur.

Marley Controls

SPX Cooling Technologies understands the capabilities and limitations of cooling towers and offers control systems that will assure you the greatest benefit from your tower. Ranging in sophistication from standard fan starters and disconnects to Programmable Logic Controllers that work in conjunction with your building or process system, these controls provide excellent energy management. Ask for *Marley Technical Report H-001-A “Cooling Tower Energy and Its Management”*.

For those of you who use your tower in the Free Cooling mode *Marley Technical Report H-002 “The Application of Cooling Towers for Free Cooling”*, these controls can help you maximize the amount of time during the year that your expensive-to-operate chiller does not have to be operated.

All motor controls are factory tested before shipping. Temperature controllers are provided to adjust fan operation to cooling requirements.

Applications Requiring Alternative Cooling Tower Selections

Certain types of applications are incompatible with any cooling tower with PVC film fill—whether a QuadraFlow or a competitive tower of similar manufacture. PVC is subject to distortion in high water temperatures, and the narrow passages typical of film-type fill are easily clogged by turbid or debris-laden water. Some of the applications, which call for alternative tower designs are:

- Water temperatures exceeding 52°C—adversely affect the service life and performance of normal PVC fill.
- Ethylene glycol content—can plug fill passages as slime and algae accumulate to feed on the available organic materials.
- Fatty acid content—found in processes such as soap and detergent manufacturing and some food processing—fatty acids pose a serious threat for plugging fill passages.
- Particulate carry over—often found in steel mills and cement plants—can both cause fill plugging, and can build up to potentially damaging levels on tower structure.
- Pulp carry over—typical of the paper industry and food processing where vacuum pumps or barometric condensers are used—causes fill plugging which may be intensified by algae.

Alternative Selections

In addition to the QuadraFlow, SPX Cooling Technologies offers a full scope of products in various designs and capacities to meet the special demands of specific applications.

Corrosion Resistance


- Stainless steel construction—Marley stainless steel towers are available in both crossflow and counterflow configurations to solve site-related problems. They offer maximum resistance to corrosion while meeting stringent building codes. PVC film-type fill.
- Sigma™ Series—available in wood, fiberglass, HDG steel or stainless steel structure. Field-erected for medium to large projects. Available in a wide range of sizes. Efficient PVC film fill.

Splash-Fill Towers

- Series 10 / Series 15—wood structure, fiberglass casing, with splash-type fill. Similar capacities to Sigma series towers. Proven in hundreds of installations. Excellent in “dirty water” situations.

Special Installation

- MS Series—custom-designed to fit your concrete enclosure. PVC film-type fill and Marley industrial-quality internal components provide years of trouble-free service.

Specifications	Specification Value
<p>1.0 Base:</p> <p>1.1 Furnish and install an induced-draft, crossflow-type, field-erected, fiberglass and stainless steel cooling tower of _____ cell(s), as shown on plans. Cells shall be similar and equal in all respects to Marley QuadraFlow Model _____.</p> <p>2.0 Thermal Performance:</p> <p>2.1 The tower shall be capable of cooling _____ m³/h of water from _____ °C to _____ °C at a design entering air wet-bulb temperature of _____ °C. The thermal performance rating shall be Certified by the Cooling Technology Institute.</p> <p>3.0 Performance Warranty:</p> <p>3.1 CTI Certification notwithstanding, the cooling tower manufacturer shall guarantee that the cooling tower supplied will meet the specified performance conditions when the tower is installed according to plan. If, because of a suspected thermal performance deficiency, the owner chooses to conduct an on-site thermal performance test under the supervision of a qualified, disinterested third party in accordance with CTI or ASME standards during the first year of operation; and if the tower fails to perform within the limits of test tolerance; then the cooling tower manufacturer will pay for the cost of the test and will make such corrections as are appropriate and agreeable to the owner to compensate for the performance deficiency.</p>	<ul style="list-style-type: none"> ■ Your specification base establishes the type, configuration, base material, and physical limitations of the cooling tower to be quoted. During the planning and layout stages of your project, you will have focused your attention on a cooling tower selection that fits your space allotment, and whose power usage is acceptable. Limitations on physical size and total operating horsepower avoid the introduction of unforeseen operational and site-related influences. Specifying the number of cells, and the maximum fan hp/cell will work to your advantage. <p>Fans of induced draft towers are in the warm (non-freezing) leaving air-stream of the tower. They accelerate the moist air upward to prevent recirculation from degrading the tower's thermal performance. In forced-draft towers, the reverse is true, and recirculation happens routinely.</p> <p>Crossflow towers have a spacious plenum between banks of fill for easy access to all of the tower's internal components. Counterflow towers (one manufacturer offers nothing else) provide only cramped and awkward access to the mechanical equipment, the drift eliminators, and the water distribution spray system—and the very small access door is up near the top of the tower!</p> <div style="text-align: right; margin-right: 50px;">  </div> <ul style="list-style-type: none"> ■ CTI Certification means that the cooling tower has been tested under operating conditions and found to perform as rated by the manufacturer under those circumstances. It assures the buyer that the tower is not intentionally or inadvertently undersized by the manufacturer. ■ However, CTI certification alone is not sufficient to assure you that the cooling tower will perform satisfactorily in your situation. Certification is established under relatively controlled conditions, and cooling towers seldom operate under such ideal circumstances. They are affected by nearby structures, machinery, enclosures, effluent from other sources, etc. Responsible and knowledgeable bidders will take such site-specific effects into consideration in selecting the cooling tower—but the specifier must insist by the written specification that the designer/manufacturer guarantee this "real world" performance. Any reluctance on the part of the bidder should cause you some concern.

Specifications	Specification Value
<p>4.0 Construction:</p>	
<p>4.1 The cold water basin, structural columns, hot water distribution basins, basin covers, top deck, fan cylinder, and access door shall be formed of inert fiber-reinforced polyester (FRP), either molded or pultruded. All hardware, with the exception of the supporting grillage, shall be fabricated of 300 series stainless steel. This shall include the mechanical equipment support structure, fan guards, and all bolts, nuts and fasteners used in the construction of the tower. Design criteria for the tower structure and anchorage shall be 1.44 kPa wind load. Tower anchorage shall also meet a 1g horizontal seismic load.</p>	<p>■ This combination of fiberglass and stainless steel provides complete protection against the degrading effects of corrosion. The molded shapes of the fiberglass also provide an architecturally pleasing appearance that is rare in a cooling tower.</p> <p>The listed design values give you assurance that the tower can be shipped, handled, constructed—and ultimately operated in a long term hostile environment.</p> <p>Section 1632 of the 1997 UBC, “Lateral Force on...Equipment Supported by Structures,” states that the anchorage for permanent equipment must resist the lateral seismic force. The structure for the equipment is not required to resist the seismic force unless failure represents a life hazard. Life hazard is dependent on location and the process supported. If you feel the need to have a compliant structure please consult SPX engineering.</p>
<p>4.2 The tower shall be capable of withstanding water having a pH of 6.5 to 8.0; a chloride content (NaCl) up to 750 ppm; a sulfate content (SO₄) up to 1200 ppm; a calcium content (CaCO₃) up to 800 ppm; silica (SiO₂) up to 150 ppm; and design hot water temperatures up to 52°C. The circulating water shall contain no oil, grease, fatty acids, or organic solvents.</p>	<p>Except for those unusual operating situations where the circulating water may be so laden with suspended solids, algae, fatty acids, product fibers, active organisms reflected in BOD, and the like that plugging of the fill is a probability, reasonable attention to the construction materials and/or their coatings is all that is normally required.</p>
<p>4.3 The specifications, as written, are intended to indicate those materials that will be capable of withstanding the above water quality in continuing service, as well as the loads described in paragraph 4.1. They are to be regarded as minimum requirements. Where component materials peculiar to individual tower designs are not specified, the manufacturers shall take the above water quality and load carrying capabilities into account in the selection of their materials of manufacture.</p>	<p>If extended longevity of the tower is required—or unusually harsh operating conditions are expected—consider specifying 316 stainless steel components. Discuss the need for this with your local Marley sales representative.</p>

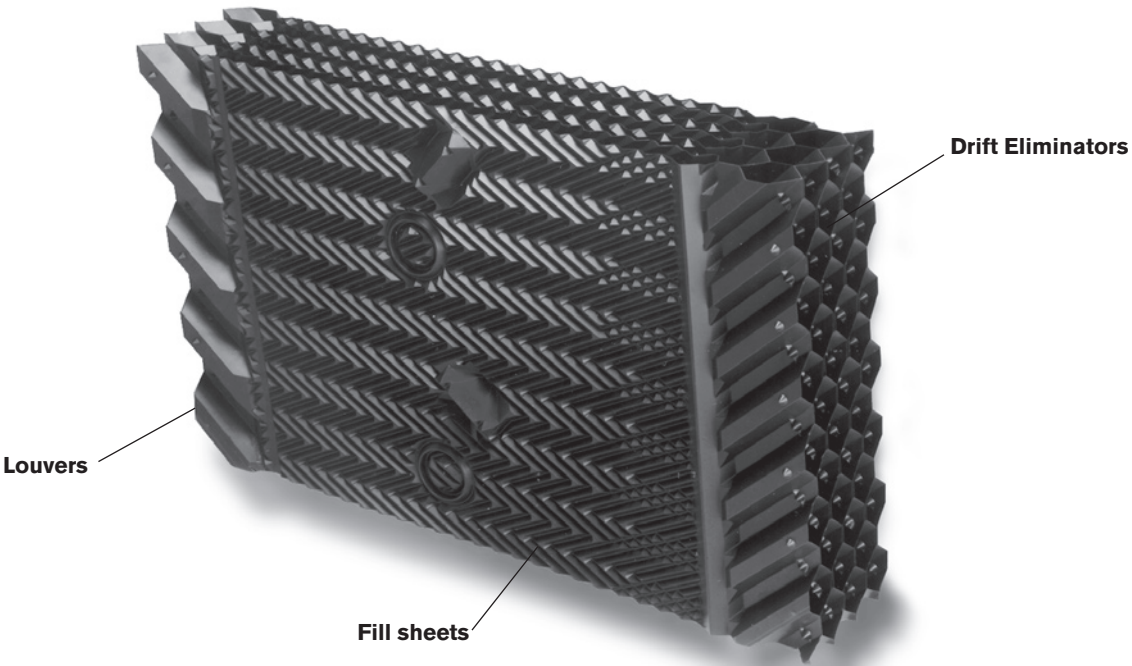
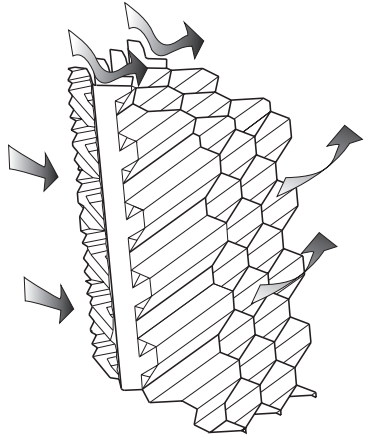
Specifications	Specification Value
----------------	---------------------

5.0 Fill, Louvers and Drift Eliminators:

- 5.1 Fill shall be film-type, thermoformed of 0.38mm thick PVC, with louvers formed as part of each fill sheet. Fill shall be suspended from stainless steel structural tubing supported from the tower structure and intermediate stainless steel panels, and shall be elevated at least 51mm above the floor of the cold water basin to facilitate cleaning. Air inlet faces of the tower shall be free of water splash-out.
- 5.2 Drift eliminators shall be PVC, triple-pass, and shall limit drift losses to 0.005% or less of the design water flow rate.

- Louvers integral with the fill keep the flowing water within the confines of the fill. The separate external louvers used by others permit water to escape the fill and form ice or produce an unsightly situation adjacent to the tower. If you plan to use your tower in the wintertime, particularly for free cooling, integral louvers will put your operating concerns to rest.

- Drift rate varies with design water loading and air rate, as well as drift eliminator depth and number of directional changes. A drift rate of 0.001% is readily available on many standard models. If a lower rate is required, please discuss with your Marley sales representative.



Specifications	Specification Value
----------------	---------------------

6.0 Mechanical Equipment:

6.1 Fan(s) shall be propeller-type, incorporating heavy-duty blades of cast aluminum or high-strength, inert composite material. Fan blades shall be individually adjustable and replaceable. Fan(s) shall be driven through a rightangle, industrial-duty, oil-lubricated, geared speed reducer that requires no oil changes for the first five (5) years of operation. Speed reducers employing pulleys and belts will not be permitted.

6.2 Motor(s) shall be ____ kW maximum, TEFC, 1.15 service factor, and specially insulated for cooling tower duty. Speed and electrical characteristics shall be 1500 (1500/750) RPM, single-winding, ____ phase, ____ hertz, ____ volts.

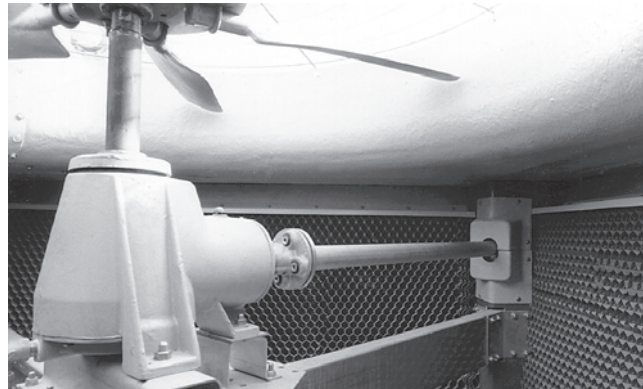
6.3 Motor shall be located outside the humid interior of the tower, within an alcove in the tower's corner structure. The motor shall be connected to the geared speed reducer by a tubular stainless steel driveshaft equipped with neoprene flexible coupling elements. A neoprene oil gauge and drain line shall extend from the gear reducer to the motor enclosure, and shall be equipped with an easily visible oil sight glass. The mechanical equipment for each cell shall rest on a rigid stainless steel box-beam assembly that resists misalignment between the motor and the gear reducer.

■ Propeller-type fans require only half the operating kW of blower-type fans. However, they should be readily adjustable to permit compensation for jobsite conditions that may tend to overload the motor.

Standard fan drives of other manufacturers may use V-belts. Considering the size of fans involved—and the hp applied—this is not good design practice. Gear drive is far more reliable and trouble free—and is not proprietary. It is currently offered as an additional cost option by principal Marley competitors.

To reduce cost, some manufacturers may use TEAO motors, whose only source of cooling is the flow of air produced by the cooling tower fan. They are sometimes applied at hp significantly beyond their nameplate rating. Also, if they drive the fan through V-belts, they are probably mounted in a shaft-vertical position. This is not good practice in the moisture-laden airstream of a cooling tower because of the tendency of moisture to invade bearings by flowing down the motor shaft.

Unless otherwise specified, motor speed will be 1800 RPM in 60 Hertz areas and 1500 RPM in 50 Hertz areas. If you prefer the operating flexibility of two-speed operation, please specify the RPM to be 1800/900 (1500/750 in 50 Hertz regions). Incidentally, two speed motors are a far better choice than separate "pony" motors which simply double the problems indicated above.



The value of a 5 year mechanical equipment warranty speaks for itself. Except for the motor, all of the mechanical equipment on a Marley tower is made by SPX Cooling Technologies. Cooling tower vendors who purchase commercial fans, gear reducers, driveshafts, etc. may require that you deal directly with those commercial suppliers for warranty satisfaction.

Specifications	Specification Value
<p>7.0 Hot Water Distribution System:</p> <p>7.1 An FRP distribution basin shall receive hot water piped to each cell of the tower. Each basin shall include one or more inlet holes and grommets to accommodate appropriately sized inlet piping. Removable, interchangeable polypropylene nozzles installed in the floor of these basins shall provide full coverage of the fill by gravity flow. The hot water basin shall be covered by removable FRP covers that keep out sunlight and give a finished appearance to the tower.</p> <p>8.0 Casing, Top Deck and Fan Cylinder:</p> <p>8.1 Tower corner casings, top deck and fan cylinder shall be fabricated of molded FRP. Fan cylinders less than 1524mm in height shall be equipped with a conical, non-sagging, removable fan guard, fabricated of welded 8mm and 7 gauge stainless steel rods.</p> <p>9.0 Cold Water Collection Basin:</p> <p>9.1 The cold water basin shall be molded of FRP and sealed watertight. It shall include a float-operated makeup valve, a 4" diameter overflow connection, and a depressed FRP sump complete with a stainless steel debris screen. The top of the basin to the base of the fill shall be covered with removable, heavy gauge stainless steel screens to keep airborne leaves and debris out of the circulating water system.</p> <p>9.2: The basin design shall allow for the installation of warm water bypass lines, as well as basin water level equalization lines between towers, if necessary. The cooling tower manufacturer shall provide drawings to facilitate the installation of these features by others.</p> <p>9.3 The cold water basin and tower shall be supported by a structural beam assembly of welded sections, provided and installed by the cooling tower manufacturer. The assembly sections shall be hot-dip galvanized after fabrication.</p>	<ul style="list-style-type: none"> ■ Gravity-flow distribution basins are a feature of crossflow type towers, resulting in operating pump heads of from 3m to 6m less than that encountered in counterflow towers, with their pressurized spray systems. Also, these basins are out where they can be easily inspected—even maintained—while the tower is in operation. Spray systems of counterflow towers, sandwiched between the top of the fill and the drift eliminators, are extremely awkward to access and maintain. ■ Marley Models 21000 thru 23000 are equipped with the fan guard specified. 24000 Models have 1.5m high, flared, velocity-recovery fan cylinders. ■ Everything within the basin is of inert, noncorroding material. Fiberglass towers can require very complicated support systems. To avoid errors in design and fabrication, the steel in immediate support of the basin should be provided by the cooling tower manufacturer. This should simplify the foundation requirements such that primary support can be accomplished by piers, if desired. <p>Not being in contact with the cooling tower water, the supports need not be stainless steel, but they should be hot dip galvanized after fabrication.</p>

Specifications	Specification Value
<p><u>10.0</u> Warranty:</p>	
<p><u>10.1</u> The manufacturer shall warrant the entire tower against failure in normal operation for a period of five (5) years following shipment to the site.</p>	<ul style="list-style-type: none"> ■ A tower that is capable of meeting these specifications should easily be warrantable for five years. Please insist upon it! And, insist that the warranty cover all the tower, including the motor, gear reducer, (V-belts, if you allow them), and all other pieces of mechanical equipment.
<p><u>11.0</u> Scope of Work:</p>	
<p><u>11.1</u> The cooling tower manufacturer shall be responsible for the design, fabrication, and delivery of materials to the project site, and for the erection of the tower over primary supports provided at the proper elevation by others. Unless otherwise specified, all piping, pumps, controls, and electrical wiring will be outside the cooling tower manufacturer's scope of work.</p>	<ul style="list-style-type: none"> ■ To assure proper fit-up of parts, and alignment of mechanical equipment, it is recommended that erection be made a part of the cooling tower manufacturer's contract. In any case, a comprehensive, illustrated Marley assembly manual will be provided which pictorially identifies the tower components—and provides step-by-step instructions designed to result in a correctly assembled tower.

Specifications

Specification Value

Control Options

Control System:

6.4 *Add the following paragraph in the Mechanical Equipment section:* Each cell of the cooling tower shall be equipped with a UL listed control system in a IP14 or IP56 outdoor enclosure capable of controlling single-speed or two-speed motors as required, and designed specifically for cooling tower applications. The panel shall include a main fused disconnect with an external operating handle, lockable in the off position for safety. Across-the-line magnetic starters or solid state soft-start starters as required shall be controlled with a thermostatic or solid state temperature controller. Door mounted selector switches shall be provided to enable automatic or manual control and wired for 200VAC control. Control circuit to be wired out to terminal blocks for field connection to a remote vibration switch and for access to extra 200VAC 50VA control power, overload trip alarms and remote temperature control devices. The temperature controller shall be adjustable for the required cold water temperature. If a thermostatic controller is used it shall be mounted on the side of the tower with the temperature sensing bulb installed in the cold water basin using a suspension mounting bracket. If a solid state temperature controller is used the controller will be door mounted on the control panel. The temperature controller will display two temperatures, one for outgoing water and the other for set point. Water temperature input shall be obtained using a three-wire RTD with dry well in the outlet water piping and wired back to the solid state temperature controller in the control panel.

- If it is your opinion that the control system for the cooling tower should be part of the tower manufacturer’s responsibility, we are in wholehearted agreement with you. Who better to determine the most efficient mode and manner of a tower’s operation—and to apply a system most compatible with it—than the designer and manufacturer of the cooling tower?

Marley variable speed drives are also available for the ultimate in temperature control, energy management, and mechanical equipment longevity.



Specifications

Vibration Limit Switch:

6.5 *Add the following paragraph in the Mechanical Equipment section:* A single-pole, double-throw vibration limit switch in a IP56 housing shall be installed on the mechanical equipment support for wiring into the owner's control panel. The purpose of this switch will be to interrupt power to the motor in the event of excessive vibration. It shall be adjustable for sensitivity, and shall require manual reset.

Basin Heater:

9.4 *Add the following paragraph in the Cold Water Basin section:* Provide a system of electric immersion heaters and controls for each cell of the tower to prevent freezing of water in the collection basin during periods of winter shutdown. The system shall consist of a three-element, stainless steel, electric immersion heater welded to a 5mm thick stainless steel mounting plate, complete with a IP56 terminal box. A IP56 enclosure shall house a magnetic contactor to energize heaters; a transformer to provide 24 volt control circuit power; and a solid state circuit board for temperature and low water cutoff. A control probe shall be located in the basin to monitor water level and temperature. The system shall be capable of maintaining 4°C water temperature at an ambient air temperature of ____ °C.

Fan Motor Variable Speed Drive:

Marley All Weather ACH550 System

6.4 *Add the following paragraph in the Mechanical Equipment section when VFD is used with customers Building Management System:* A complete UL listed Variable Speed Drive system in a IP10 indoor, IP52 indoor or IP14 outdoor enclosure shall be provided. The VFD shall use PWM technology with IGBT switching and integrated bypass design. VFD output switching shall not cause mechanical issues with gearbox teeth or drive shafts. The VFD shall catch a fan spinning in the reverse direction without tripping. The panel shall include a main disconnect with short circuit protection and external operating handle, lockable in the off position for safety. The VFD system shall receive a

Specification Value

■ Unless specified otherwise, a Marley M-5 vibration switch will be provided. The requirement for manual reset assures that the cooling tower will be visited to determine the cause of excessive vibration.



■ The basin heater components described at left represent our recommendation for a reliable automatic system for the prevention of basin freezing. They are designed for installation at the jobsite.

Submerged in basin water, in which zinc ions are present, copper immersion heaters must not be used. Insist upon stainless steel.

The ambient air temperature that you insert in the specifications should be the lowest 1% level of winter temperature prevalent at site.

■ Marley VFD drive systems are designed to combine absolute temperature control with ideal energy management. The cooling tower user selects a cold water temperature and the drive system will vary the fan speed to maintain that temperature. Precise temperature control is accomplished with far less stress to the mechanical equipment components. The improved energy management provides fast payback. Indeed, many utilities offer generous rebates for users having installed VFD drives.



Specifications	Specification Value
<p>speed reference signal from the Building Management System monitoring the tower fluid temperature. As an option to receiving the speed reference signal from a building management system, the drive must have the capability to receive a 4-20 ma temperature signal from an RTD transmitter. The VFD shall have an internal PI regulator to modulate fan speed maintaining set point temperature. The drive's panel display shall be able to display the set-point temperature and cold-fluid temperature on two separate lines. The bypass shall include a complete magnetic bypass circuit and with capability to isolate the VFD when in the bypass mode. Transfer to the bypass mode shall be manual in the event of VFD failure. Once the motor is transferred to the by-pass circuit the fan motor will run at constant full speed. The bypass circuit will not modulate ON and OFF based on fluid temperature. The application must be able to handle very cold fluid temperatures while the VFD is in a by-pass mode. Operator controls shall be mounted on the front of the enclosure and shall consist of start and stop control, bypass/VFD selection, Auto/Manual selections, manual speed control. To prevent heating problems in the fluid cooler fan motor and to assure proper gear reducer lubrication the VFD system shall de-energize the motor once 25% motor speed is reached and cooling is no longer required. The fluid cooler manufacturer shall supply VFD start-up assistance. Tower vibration testing throughout the speed range is required to identify and lockout any natural frequency vibration levels which may exceed CTI guidelines.</p>	

Specifications

Specification Value

Marley Premium VFD System

6.4

Add the following paragraph in the Mechanical Equipment section: A complete UL listed Variable Speed Drive system in a IP52 indoor or IP14 outdoor enclosure shall be provided. The VFD shall use PWM technology with IGBT switching and integrated by-pass design. The panel shall include a main disconnect with short circuit protection and external operating handle, lockable in the off position for safety. The system shall include a solid state, PID temperature controller to adjust frequency output of the drive in response to the tower cold water temperature. The temperature of the cold water and set point shall be displayed on the door of the control panel. The by-pass circuit shall include a complete magnetic bypass that isolates the VFD when in the bypass mode. Transfer to the bypass mode shall be automatic in the event of VFD failure or for trip faults. The bypass contactor shall be cycled on and off while operating in bypass, to maintain the set-point temperature of the cold water. The drive design shall be operated as a stand-alone system or controlled with a building automation system. The BAS can be the normal source of control and the integrated temperature controller may be used as a backup to the building automation system. Operator controls shall be mounted on the front of the enclosure and shall consist of start and stop control, bypass/VFD selector switch, Auto/Manual selector switch, manual speed control, and solid state temperature controller. An emergency bypass selector switch internal to the panel allowing the cooling tower fan motor to be run at full speed shall be furnished.

To prevent heating problems in the cooling tower fan motor and to assure proper gear reducer lubrication the VFD system shall cycle the motor on/off when the minimum allowable motor speed is reached. The cooling tower manufacturer shall supply VFD start-up and tower vibration testing to identify and lock out any vibration levels which may exceed CTI guidelines.





COOLING TECHNOLOGIES

UNIT 505, BLOCK B
PHILEO DAMANSARA 2
NO. 15 JALAN 16/11
OFF JALAN DAMANSARA
46350 PETALING JAYA, MALAYSIA
60 3 7947 7800
spxcooling.asiapacinfo@spx.com
spxcooling.com

In the interest of technological progress,
all products are subject to design and/or
material change without notice.
©2010 SPX Cooling Technologies
sea_QF-TS-10