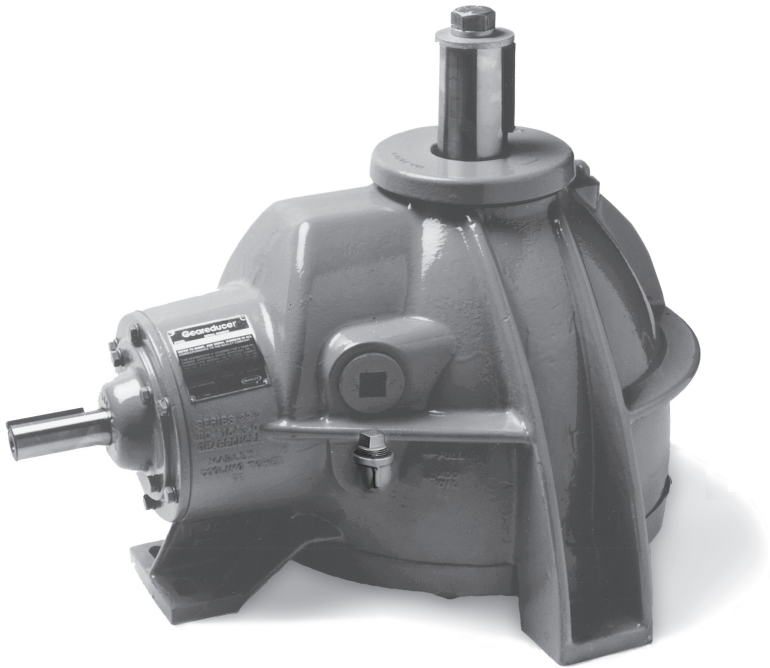


Geareducer® Drive



Marley 2250 Geareducer

Marley Geareducers have been manufactured in a variety of sizes and load ratings appropriate for cooling tower applications since the 1930s. We began doing so because geared speed reducers suitable for cooling tower service were not commercially available—and because it made no sense to expect V-belt drives to provide more than marginal reliability above 10 hp in an application as demanding as a cooling tower. Since that time, we have produced well over 100,000 units, and have established an unparalleled record of performance reliability.

In addition to strict attention to design and manufacturing detail, a principal reason for that record is that every Geareducer we produce is run-in under load at the factory, inspected and adjusted before shipment.

Present generation Geareducers that are applied in the NC®, QuadraFlow®, MH Fluid Cooler, MD, Series 10, Series 15, Sigma,

Unilite® and MS product lines carry a 5-year warranty. Indeed, the Geareducers utilized in any of these product lines do not require a lubricant change for the first 5 years of operation!

Over 80 years of experience in the design and manufacture of Geareducers has enabled us not only to achieve unprecedented levels of quality and performance, but to do so with absolutely minimal impact on the overall tower cost. Get a price for geared speed reduction on the other manufacturer's cooling tower and you'll see what we mean. No wonder they would rather provide V-belt drive!

Although Marley towers may cost slightly more than those of other manufacturers, very little of the cost difference is caused by the Geareducer drive. It results from a cumulation of all the Marley Differences which add value far beyond the cost.

Customer Benefit

Marley's Geareducer drive benefits the customer in several ways:

- Compared to the commercial gear reduction units offered by other manufacturers (and they are available if required) our 5-year warranty says it all. Maintenance costs are extremely low—and reliability is not a concern!
- Compared to V-belt drives (no matter how "multiple" the belts are), Geareducers require less operating energy; waste no energy through belt slippage; do not annoy neighbors with squealing; and require no regular replacement of expensive belts!
- Compared to either of the above alternatives, Geareducers do not require you to keep separate records of component suppliers, or to chase down your sources of service parts.



How to specify

The following language will exhibit your intention to purchase a cooling tower with a gear reduction to transfer power from the motor to the fan at the correct speed:

"The fan shall be driven through a rightangle gear reduction unit that enables the motor to operate in a shaft-horizontal position. The speed reducer shall be equipped with spiral bevel gears operating in an oil bath, and the action of the gears shall provide lubrication to bearings and other internal components. Gear casing shall be epoxy-coated cast iron, and shall be equipped with fittings to facilitate filling and draining.

The gear reducer shall be designed and manufactured specifically for cooling tower use, and shall be warranted against defects in materials and workmanship for a period of five (5) years. Lubricant replacement will not be required for the first five years of operation. Speed reduction by the use of V-belts and pulleys will not be considered appropriate for this application."

SPX COOLING TECHNOLOGIES, INC.

7401 WEST 129 STREET
OVERLAND PARK, KS 66213 USA
913 664 7400 | spxcooling@spx.com
spxcooling.com

ITEM-AP-1D | ISSUED 04/2017

COPYRIGHT © 2017 SPX CORPORATION

In the interest of technological progress, all products are subject to design and/or material change without notice.

