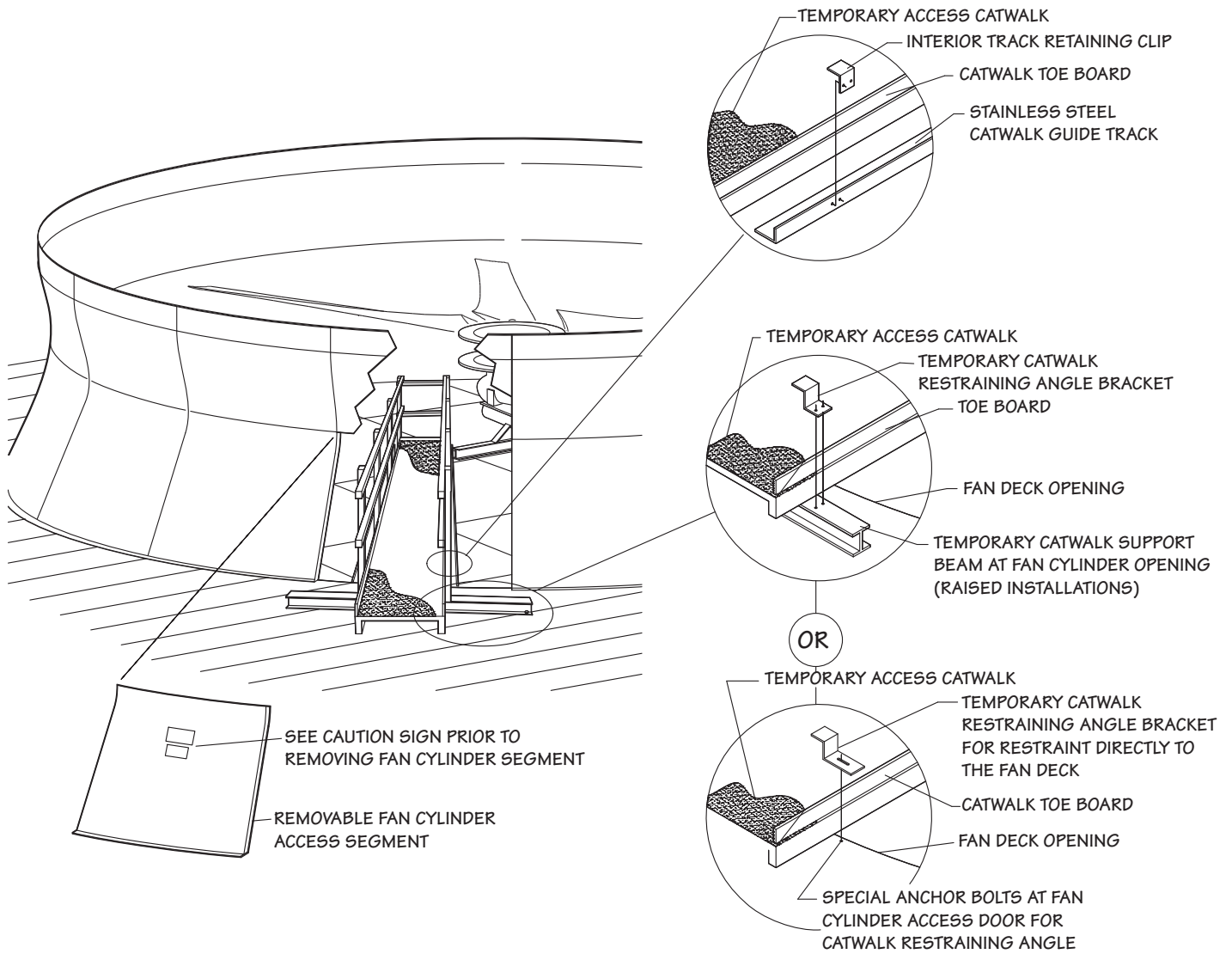


/ Mechanical Equipment Temporary Access Catwalk /

User Manual 08-1150

Catwalk Components



Catwalk Assembly Instructions

⚠ Warning

Always shut off electrical power to the tower fan motor prior to performing any inspections that may involve physical contact with the mechanical or electrical equipment in or on the tower. Lock out and tag out any electrical switches to prevent others from turning the power back on. Service personnel must wear proper personal protective clothing and equipment.

Review all site and owner safety manuals and follow the most stringent requirements.

Follow all appropriate owner safety and lock-out procedures before removing a fan cylinder access segment or using the mechanical equipment temporary access catwalk.

1–Remove and store the fan cylinder access segment and protect the opening per owner and OSHA safety requirements. Collect all loose hardware that was removed and inspect before reuse.

2–Inspect the temporary access catwalk for damage or other defects that could impact the safe load posted on the catwalk section. Verify all hold-down hardware, brackets, beams, etc. are on hand for a complete and safe installation.

3–Visually inspect the permanently installed guide track in each fan cell opening for damage and/or missing brackets or hardware.

4–Damaged parts should be repaired by qualified personnel or replaced prior to use.

5–Keep loads below the capacity limits posted on the catwalk.

⚠ Warning

Safety requirements for personal tie-off or protecting openings shall be followed at all times.

6–Maneuver the access catwalk into the fan cell opening through the removed fan cylinder access segment opening using the guide track assembly which is permanently installed in each fan cell. The guide track may be at the fan deck level or raised slightly to clear steel support beams depending upon tower size and design.

7–On fan deck level installations two anchor bolts installed in the fan cylinder access segment will be used to anchor the outer hold down Z-brackets. These Z-brackets will have slots. See illustration.



Catwalk Assembly Instructions

8—On raised installations a temporary catwalk support beam is supplied and shall be attached to the temporary catwalk using two supplied Z-brackets. These Z-brackets have two holes to attach to the temporary catwalk support beam. See illustration.

9—Once the catwalk is secured outside the fan cylinder to either the fan deck or the temporary outrigger beam, install the interior track retaining clips at locations provided to hold the catwalk to the permanent guide track. All clips shall be installed prior to use of the catwalk for maintenance. See illustration.

10—When fan area maintenance is complete the instructions are reversed. All interior clip angles, beam (if required) and Z-brackets are removed and then the temporary access catwalk is then removed from the fan cell. The catwalk should be stored and secured on the fan deck in the area designated by the owner or in storage restraints if provided.

⚠ Warning

The owner shall provide guarded openings and follow all OSHA and site safety regulations if the openings are not immediately closed by reinstalling the fan cylinder access panels.

⚠ Caution

The temporary access catwalk must be removed from the fan opening prior to starting the fan.

SPX[®]

COOLING TECHNOLOGIES

7401 WEST 129 STREET | OVERLAND PARK, KANSAS 66213 UNITED STATES | 913 664 7400 | spxcooling@spx.com | spxcooling.com

In the interest of technological progress, all products are subject to design and/or material change without notice.
©2008 SPX Cooling Technologies, Inc. | Printed in USA

Manual 08-1150