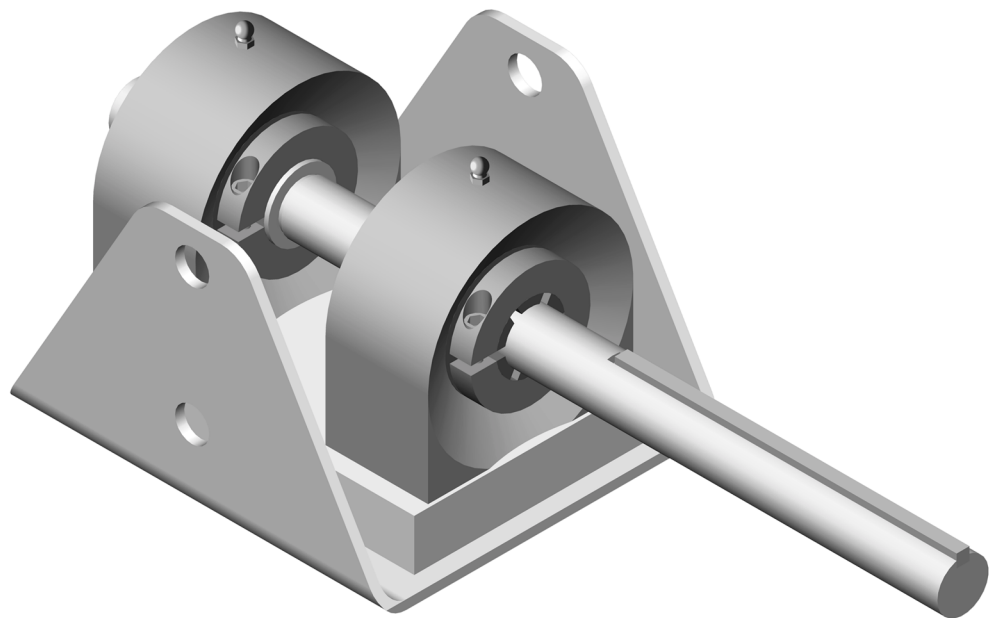


1300 Series

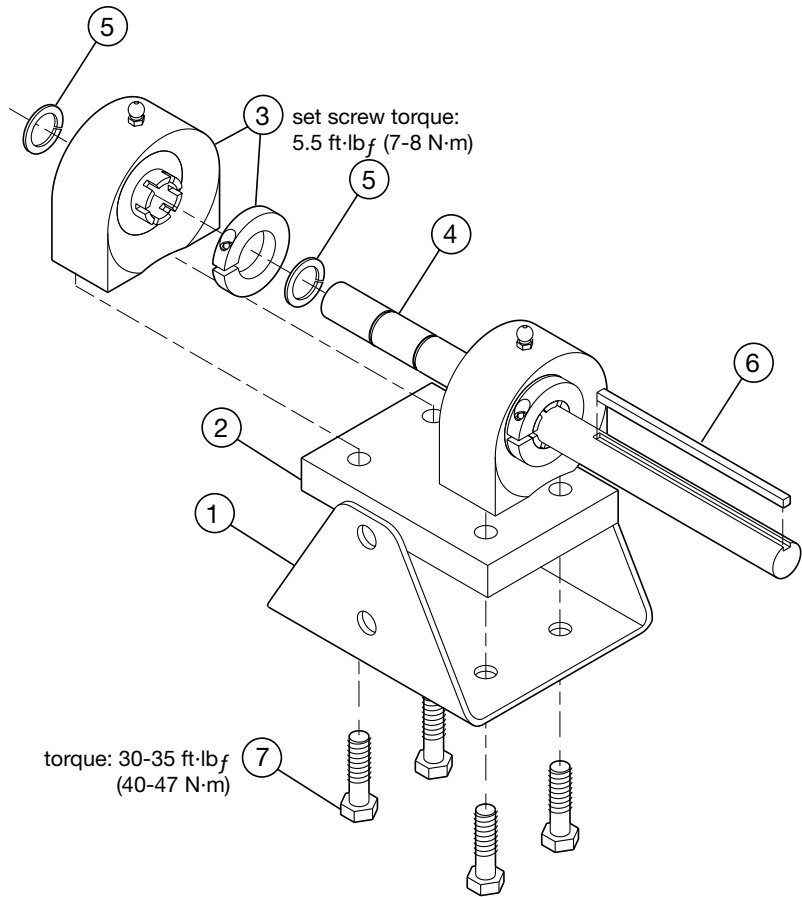
BEARING ASSEMBLY

User Manual



Components

- 1 Mounting Plate
- 2 Spacer Plate
- 3 Bearing (2 required)
- 4 Shaft
- 5 Retaining Ring (2 required)
- 6 Key
- 7 Cap Screw (4 required)



Installation: Installation should only be performed by a qualified technician. Lockout and disable any system drivers. Coat the shaft(s) with a lubricant or anti-seize compound. Follow the instructions supplied with your replacement kit or the tower manual. Contact Marley should you need more information for your application.

Maintenance: Lubricate the bearings with Chevron SRI-2. Grease initially and subsequently every 3 to 6 months. Consult Marley for alternate lubricants.

Bearing Replacement: Bearings should only be replaced by a qualified technician. Replace a bearing by removing its mounting cap screws and loosening the bearing locking collar set screws. Then slide the bearing off the shaft and install the new bearing oriented the same as the bearing removed. Tighten the mounting cap screws as specified. Fit the new bearing locking collars square and snug against the bearing shoulder. Tighten the locking collar set screws as specified.



Marley Cooling Tower

A United Dominion Company

The Marley Cooling Tower Company
7401 W 129 Street • Overland Park, KS 66213 • 913.664.7400
email: info@marleyct.com • www.marleyct.com
In the interest of technological progress, all products are
subject to design and/or material change without notice.
©2000 Marley Cooling Tower Printed in USA