

Factory Assembled cooling towers

FOR POWER AND INDUSTRIAL APPLICATIONS

MARLEY® 



Marley Factory-Assembled Cooling



DURABLE: Robust design and materials of construction

- Heavy gauge steel housing; stainless steel or galvanized
- Industrial gear drive as found in larger field-erected towers
- Welded steel guardrail and safety cage system
- Integral cold water basin eliminates concrete basin expense
- Easy internal access to inspect internal components, fill and water distribution system
- Large door offers easy access while maintaining water flow



RELIABLE: Industrial-grade Marley-engineered components

- 5-year mechanical component warranty
- 5-year maintenance-free System 5 Marley Geareducer®
- High efficiency axial fan with adjustable-pitch aluminum fan blades
- Energy efficient low-clog PVC heat exchange media; crossflow and counterflow
- Integral louvers, fill and drift eliminators
- Motor Outside Airstream (MOA) available for easy maintenance access



COST EFFECTIVE: Accelerated delivery, construction and outage schedules

- Factory assembled modules deliver about 6 weeks after drawings approved
- Turnkey system speeds field assembly; piping, steel, electrical, & commissioning
- Safer construction at ground level with minimal elevated work
- Modular components shorten outage duration



PROVEN: Industry Codes and Certifications

- CTI 201 certified performance – eliminates need for field performance tests
- Factory Mutual (FM) approved available modules
- ASHRAE 90.1 compliant
- ASCE, OSHA, OSHPD, ACOP L8, IBC, FBC (Florida Building Code)
- China GB7, Eurovent, ISO, BSI

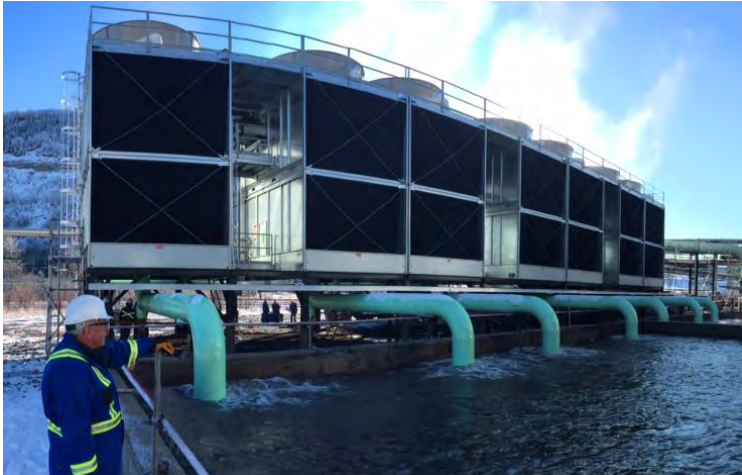


QUIET: Published sound data independently verified by CTI-licensed test agency

- Rugged structural design minimizes vibration
- Ultra-quiet fan and attenuation available for further sound reductions
- Sound levels as low as 50 dBA



Towers Are Proven Performers



ARE MARLEY COOLING TOWER MODULES THE RIGHT CHOICE FOR YOUR FACILITY?

Marley Factory-Assembled Cooling Tower Modules deserve careful consideration for today's power generation plant, chemical, oil and gas plants and other industrial cooling applications with small to medium thermal loads. Whether designing a new plant or replacing an aging traditional field-erected cooling tower, Marley Cooling Tower Modules offer several advantages, including rugged, industrial-strength construction materials, factory-assembly, turnkey installation, faster, safer completion and shorter outage requirements.

MARLEY NC[®] COOLING TOWER PRODUCT PARAMETERS

- Flow rates up to 4750 gpm (1080 m³/hr) per module
- Inlet water temperatures up to 160° F (70°C)
- Snow loads to 60 psf (290 kg/m²) standard
- Wind loads to 50 psf (240 kg/m²) standard; available up to 165 psf (800 kg/m²)
- Sound levels as low as 50 dBA
- Drift rates per industry standard

ADDITIONAL PRODUCT PUBLICATIONS

For further information about our products – including engineering schematics, data, layout requirements and more – download these publications at spxcooling.com.



Marley NC
Brochure



Marley NC
Specifications



Marley MD
Brochure



SPX COOLING TECHNOLOGIES, INC.

7401 WEST 129 STREET
OVERLAND PARK, KS 66213 USA
913 664 7400 | spxcooling@spx.com
spxcooling.com

MOD-PI-16 | ISSUED 12/2016

COPYRIGHT © 2016 SPX CORPORATION

In the interest of technological progress, all products are subject to design and/or material change without notice.

