

# Marley Replacement Parts

The Right T.E.C.H. for Your MD Cooling Tower

TECHNOLOGY • EQUIPMENT • COMPONENTS • HELP

**MARLEY** 

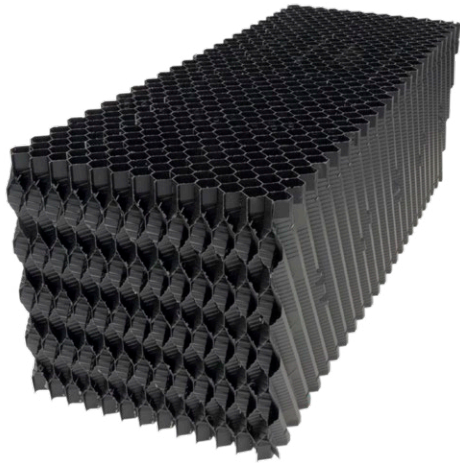


# Marley Replacement Parts

FOR MD COOLING TOWERS

## PROTECT YOUR INVESTMENT WITH GENUINE MARLEY® PARTS

Genuine Marley Parts from SPX Cooling Technologies, Inc. were installed at the factory to build your Marley Cooling Tower. To uphold the quality engineering and performance that define your cooling tower, insist on genuine Marley Parts for any service, repair or rebuild project. With nearly 100 years of experience fabricating cooling towers, trust SPX to provide the right TECH throughout your cooling tower's lifespan.



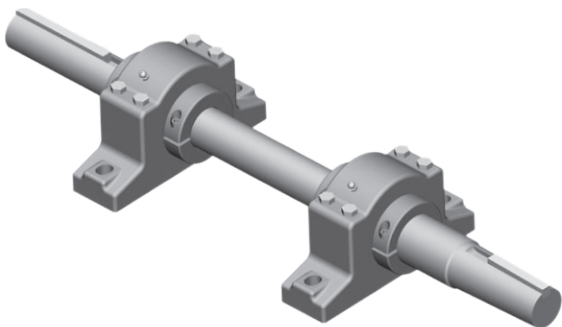
### ① Marley MC120S Fill

Marley MC120 is a high performance film fill pack system designed for counterflow towers. Packs have a 1/2" staggered edge on the air inlet side that enhances air distribution and performance. The textured, crossed corrugations provide the surface area and turbulence for efficient heat transfer. Log packs are nominally 12" in air travel height and 12" deep.



### ② Marley X7 Fan

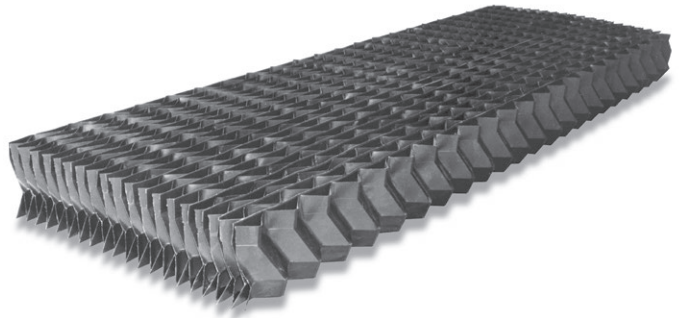
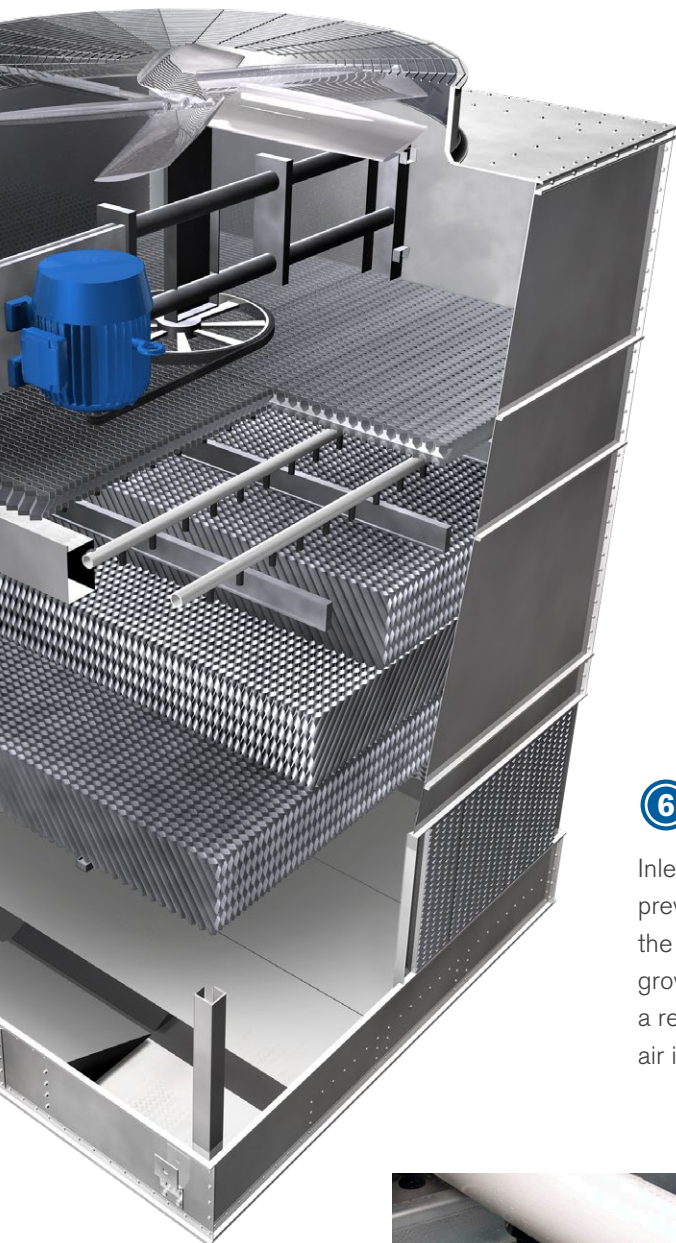
The wide chord blade design delivers superior air flow and pressure capability at low speed and is designed for quiet operation. The high performance X7 airfoil is one of the most efficient in the industry today.



### ③ Fan Drives

Technologies used to transmit power in a cooling tower include belt drives, gear drives and direct drives. The Marley Power Belt drive system is standard equipment in Marley MD Cooling Towers and features all-aluminum sheaves, power band belts and long-life bearings for dependable service.



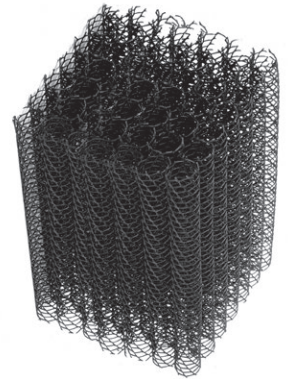


#### ④ XCEL® TU Drift Eliminators

The XCEL® TU Drift Eliminators limit drift losses to no more than .001% of the design flow rate. XCEL® Eliminators are 17 mil thick PVC and require little or no maintenance. Loose debris is easily removed using low pressure water spray.

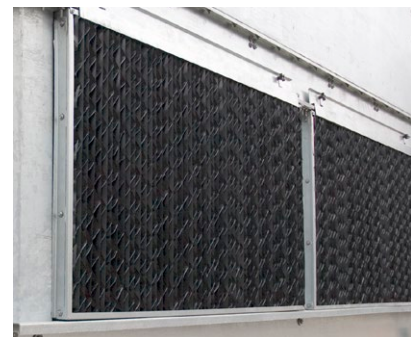
#### ⑤ Splash Attenuators

To reduce falling water noise, polypropylene splash attenuation media may be installed in the cooling tower collection basin.



#### ⑥ Triple-Pass Inlet Louvers

Inlet louvers limit water splash out and prevent direct sunlight from entering the collection basin to deter microbial growth. The PVC louvers are enclosed in a removable frame that attaches to the air inlet without tools for easy service.



#### ⑦ Marley NS7 Counterflow Nozzles


NS7 nozzles comprise of an injection-molded polypropylene body with integral turbulator. The nozzle is available in 2 sizes that adjust for a wide range of water flow rates. Nozzles have no moving parts and are easy to remove for cleaning.

# Marley Replacement Parts

FOR MD COOLING TOWERS

MARLEY® 

THE RIGHT TECH TO KEEP IT

COOL  L

Find your Marley technical expert at [spxcooling.com/relocator](https://spxcooling.com/relocator), 1-800-4-Marley or [spxcooling@spx.com](mailto:spxcooling@spx.com).

---

#### SPX COOLING TECHNOLOGIES, INC.

7401 WEST 129 STREET  
OVERLAND PARK, KS 66213 USA  
913 664 7400 | [spxcooling@spx.com](mailto:spxcooling@spx.com)  
[spxcooling.com](https://spxcooling.com)

MRP-MD-19 | ISSUED 06/2019

©2019 SPX COOLING TECHNOLOGIES, INC. ALL RIGHTS RESERVED.

In the interest of technological progress, all products are subject to design and/or material change without notice.

