

Overview

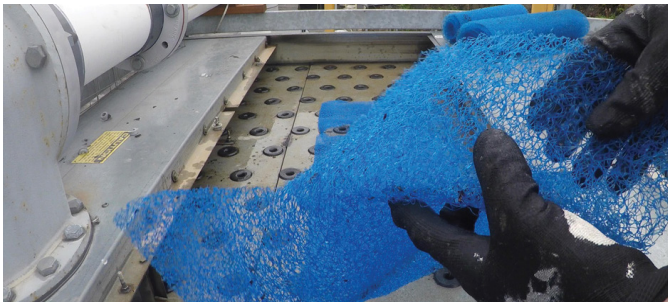
The MarleyGard Basin Filter alleviates maintenance concerns and saves time and money by simplifying the cleaning of a cooling tower's hot water basin and protecting cooling tower components.

The patent-pending Basin Filter comprises an antimicrobial nylon filter and 304 stainless steel. The Basin Filter helps extend equipment life by capturing mineral scale, pipe rust, fibers and other debris and preventing them from reaching other components downstream – including cooling tower fill, pump impellers and heat exchangers.

MarleyGard Basin Filters are available to install in new Marley NC® Cooling Towers, with or without nozzle cups, and also as an easy-to-install “retrofit” filtration system kit for factory-assembled, crossflow cooling towers.

Benefits

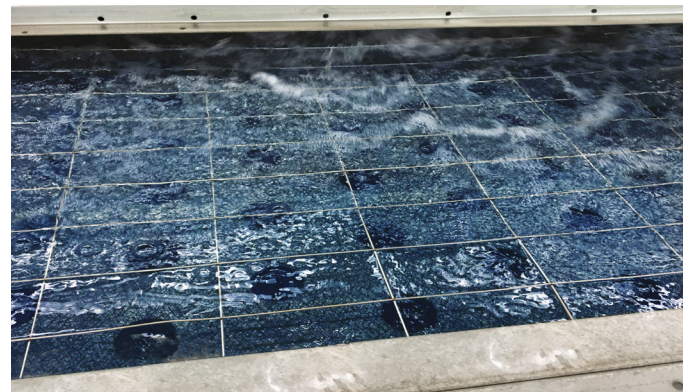
- Reduces frequency of maintenance and cleaning costs. Forget monthly basin cleaning; simply replace the Basin Filter media every 6 months
- Installs easily in less than an hour
- Reduces risk of basin overflow between bi-annual cleanings by ensuring free flow of water to nozzles, even with up to 75% heavy debris blockage
- Conserves water by eliminating filter backwash



See MarleyGard Basin Filter installation and replacement videos at [spxcooling.com](https://www.spxcooling.com)



Marley NC 8400 Installation



Marley NC 8300 Installation

Advantages

- Guards against premature component replacement and helps maintain cooling tower performance
- Provides up to double the clog resistance when compared to a basin without the Basin Filter
- Withstands harsh cooling tower environments
- Captures debris #4 mesh or larger

Replacement intervals of up to 6 months is recommended to renew antimicrobial properties of filter media.

SPX COOLING TECH, LLC

7401 WEST 129 STREET
OVERLAND PARK, KS 66213 USA
913 664 7400 | spxcooling@spx.com
[spxcooling.com](https://www.spxcooling.com)

SP-BGF-25 | ISSUED 1/2025

©2025 SPX COOLING TECH, LLC. | ALL RIGHTS RESERVED

In the interest of technological progress, all products are subject to design and/or material change without notice.