

Damper Actuator for Marley Fluid Cooler



Features and Benefits

- Actuator is powered by an extended duty, high-torque, reversible motor. The motor is suitable for both on/off and modulating applications. The motor is Class "B" insulated and has an internal thermal overload protective device. This device protects the motor if a "stall" condition occurs thus preventing the motor from overheating which results in premature motor failure.
- All gears used in the actuator are manufactured from high alloy steel. Each gear is precision machined, then heat-treated, giving the gears exceptional strength. Each gear assembly is designed and tested to withstand the stall torque generated by the motor.
- Each gear and spring assembly is permanently lubricated with a high quality lubricant selected to meet a wide range of operational and environmental conditions. Periodic lubrication is not required.
- Actuator features a declutchable manual override. The actuator gearing is disengaged from the motor thus the actuator cannot be operated electrically while in manual operation.

Specifications

- Output Torque: 350 in lb
- Temperature Range: -40°F to 150°F
- Speed of Operation: 10 sec/90°
- Current Rating 115VAC: 0.40 NLA, 0.60 LRA
- Duty Cycle Rating 115VAC, 1 Phase, 60 Hz: 50% Open/Close Service

Duty Cycle — the percentage of time the electric motor is energized vs. the time it is at rest, in reversing duty and with the actuator running at it's rated load maximum published torque.

more 

Typical Fluid Cooler Damper Actuator Wiring Diagrams

Actuator Wiring – Single Phase, Heater

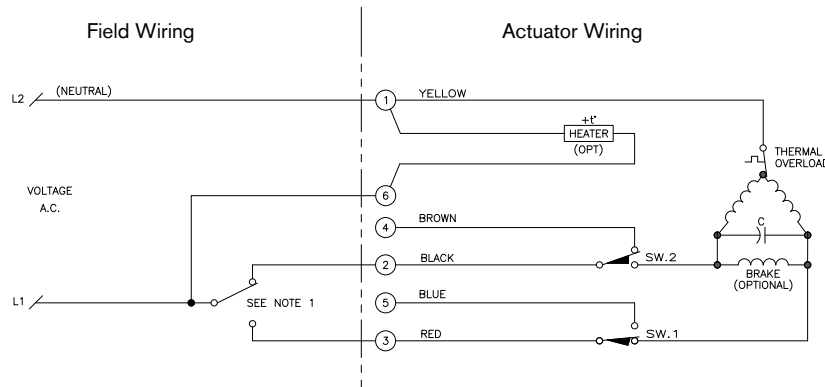
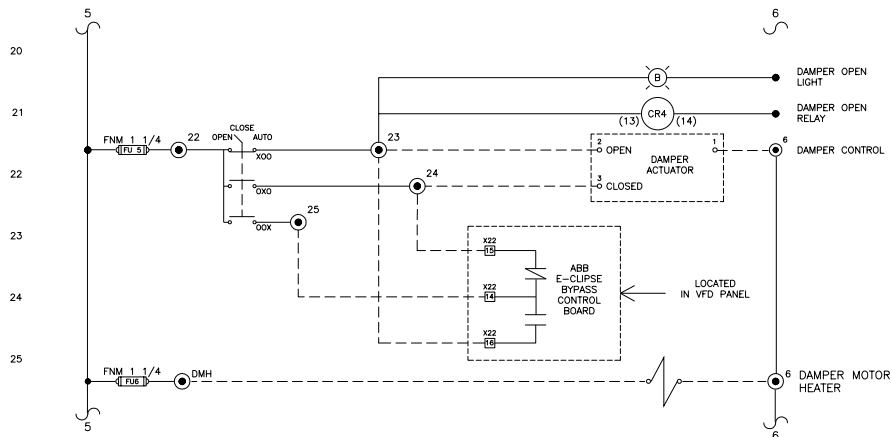
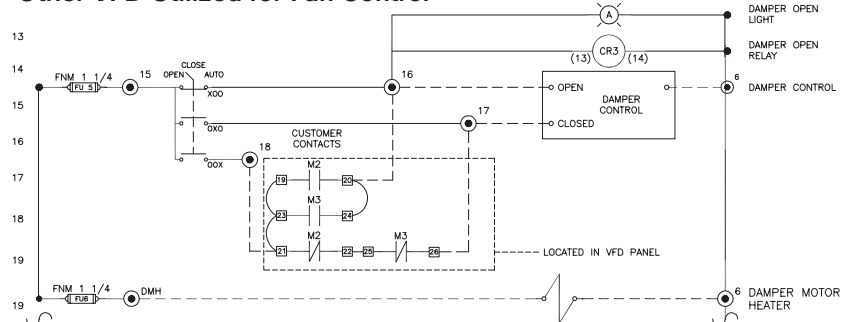


ABB ACH550 VFD Utilized for Fan Control



Other VFD Utilized for Fan Control



SPX COOLING TECHNOLOGIES, INC.

7401 WEST 129 STREET
OVERLAND PARK, KS 66213 USA
913 664 7400 | spxcooling@spx.com
spxcooling.com

TECH-ACTUATOR-18 | ISSUED 3/2018

© 2018 SPX COOLING TECHNOLOGIES, INC | ALL RIGHTS RESERVED

In the interest of technological progress, all products are subject to design
and/or material change without notice.

