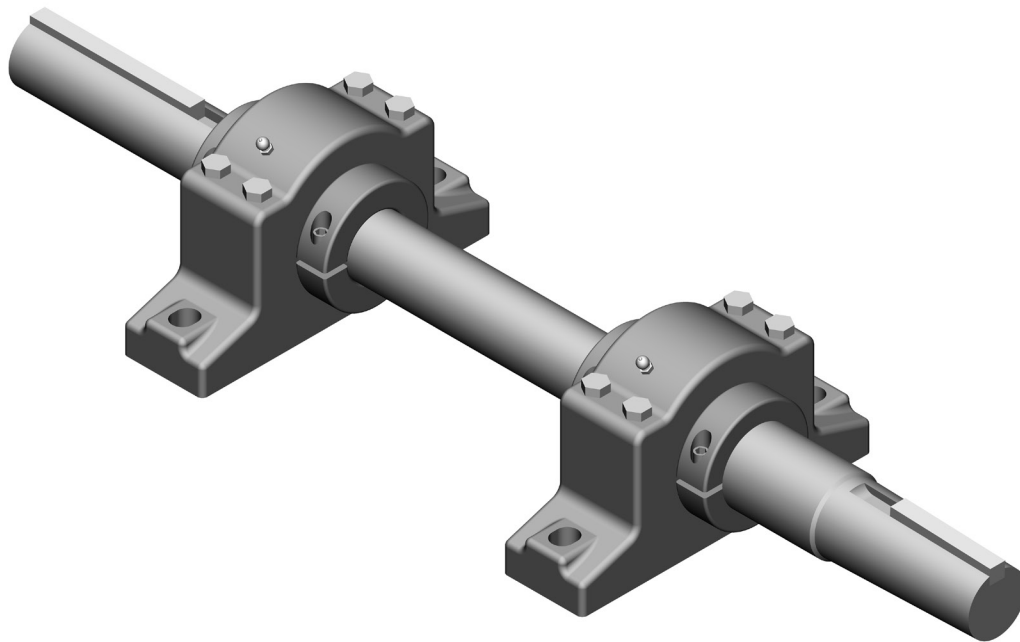


1500 Series bearing assembly

INSTALLATION - OPERATION - MAINTENANCE

Z0479059_A ISSUED 06/2017

READ AND UNDERSTAND THIS MANUAL PRIOR TO OPERATING OR SERVICING THIS PRODUCT.

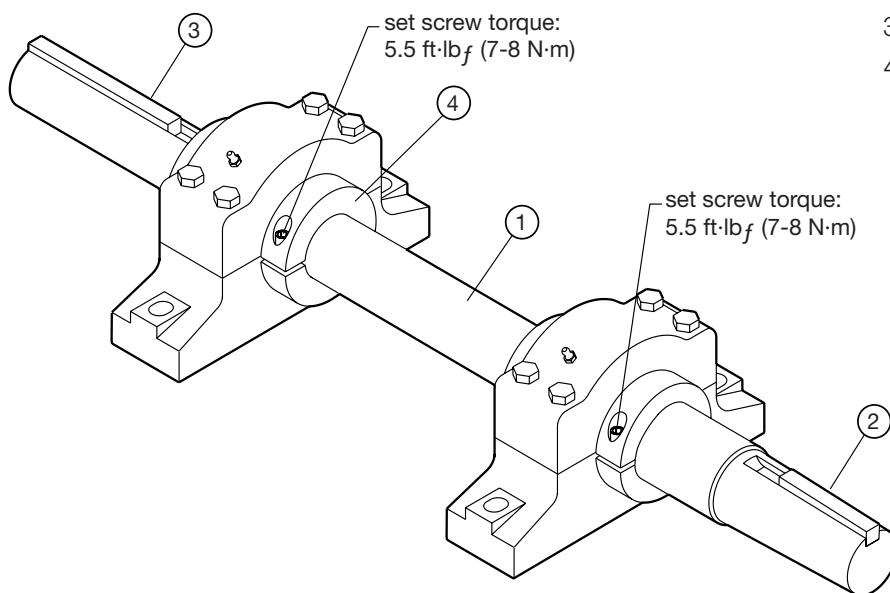


1500 Series bearing assembly

USER MANUAL

Components

- 1 Shaft
- 2 Fan Key
- 3 Sheave key
- 4 Bearing (2 required)



Installation: Installation should only be performed by a qualified technician. Lockout and disable any system drivers. Coat the shaft(s) with a lubricant or anti-seize compound. Follow the instructions supplied with your replacement kit or the tower User Manual. Contact your Marley sales representative should you need more information for your application.

Maintenance: Lubricate the bearings with Chevron SRI-2 grease. Grease initially and subsequently every 3 to 6 months. Consult your Marley sales representative for alternate lubricants.

Bearing Replacement: Bearings should only be replaced by a qualified technician. Replace a bearing by removing its mounting bolts and loosening the bearing locking collar set screws. Slide the bearing off the shaft and install the new bearing oriented the same as the bearing removed. Tighten the bearing mounting bolts. Fit the new bearing locking collars square and snug against the bearing shoulder. Tighten the locking collar set screws as specified.

SPX COOLING TECHNOLOGIES, INC.

7401 WEST 129 STREET
OVERLAND PARK, KS 66213 USA
913 664 7400 | spxcooling@spx.com
spxcooling.com

Z0479059_A (98-1383A) | ISSUED 06/2017

COPYRIGHT © 2017 SPX CORPORATION

In the interest of technological progress, all products are subject to design and/or material change without notice.

