

# NX™ fiberglass cooling tower

SETTING THE PACE FOR A GROWING WORLD

MARLEY®







# the NX: pace-setting performance

As global industries grow, their thermal cooling needs are growing with them. The widely varied climates and high-demand applications of these markets are not the place for old technology or inferior quality.

The Marley NX is a cooling tower designed specifically for expanding markets, and optimized for smaller tonnage applications. Leveraging decades of global cooling tower experience, the Marley NX excels when other cannot — offering the innovation, performance, and durability that high-growth industry demands. And every NX unit is backed by the integrity, reliability, and quality that is uniquely Marley.

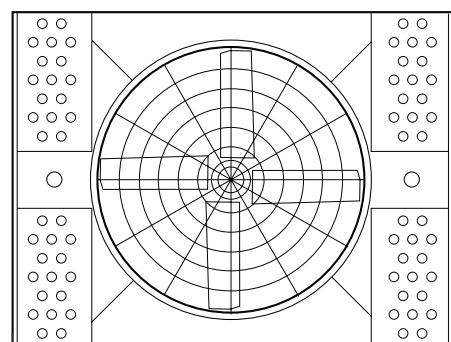


# uniquely designed for unique global markets

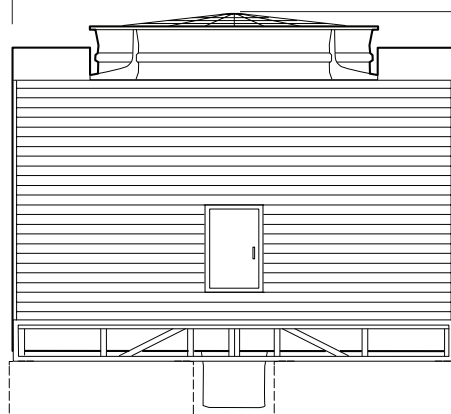
SPX

Model	Nominal Capacity tons*	Dimensions mm		
		L	W	H
NX1010	121-174	1728	3244	3225
NX1015	182-249	2522	3860	3302
NX1020	243-317	2808	4130	3528
NX1025	304-372	3494	4504	3548
NX2030	355-437	3470	5542	4016
NX2040	447-552	3641	5799	5050
NX2050	576-646	3895	6049	5888
NX2060	637-788	4143	6299	6526

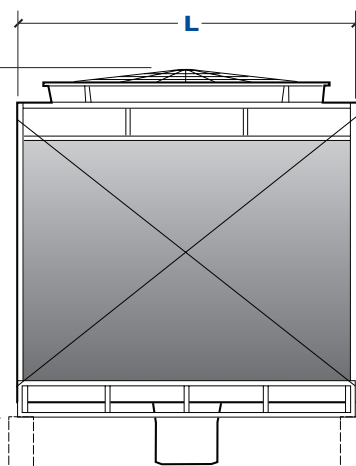
\*Based on .68 m<sup>3</sup>/hr per ton at 35°C HW, 29.5°C CW, 25.5°C WB



W



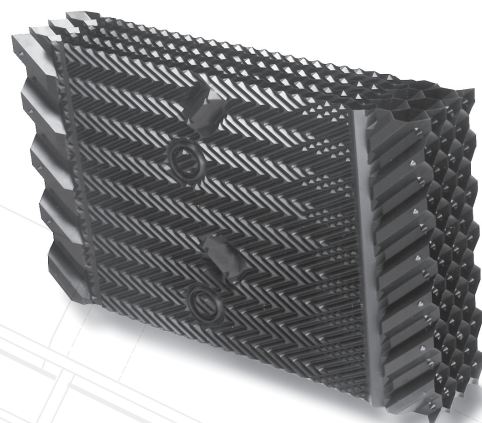
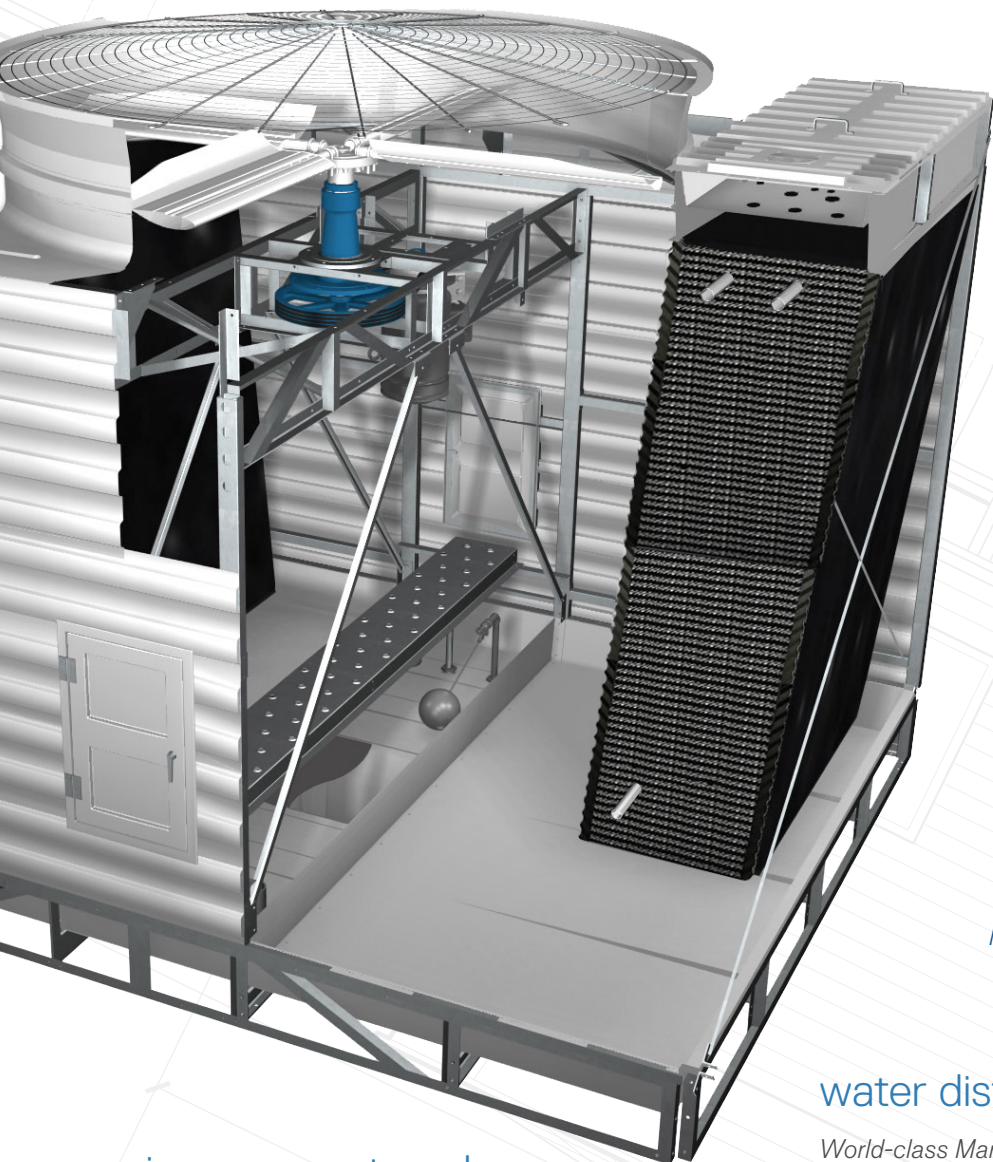
H



L







Marley High-Efficiency MX Film-Fill



Marley "Spiral Target" Nozzle

## air movement package

*More airflow for greater efficiency.*

- High-Efficiency Fan – strong aluminum alloy with adjustable-pitch blades and specialized TEAO motor
- Fan Guard – welded heavy-gauge rods, hot-dip galvanized after fabrication
- Eased Inlet Fan Cylinder – assures full-area, low-turbulent airflow through cylinder
- Durable Bearing Housing – cast housing assures proper shaft alignment and minimizes belt slippage

## structure

*Thoughtful, purpose-built design.*

- Quality Materials – utilizes FRP and hot-dip galvanized steel frame for added strength and fiberglass panels for superior corrosion resistance
- Crossflow Configuration – makes maintenance simpler and safer than other designs
- Large Access Door – allows safer, non-confining and more efficient visual inspections of cold water basin, internal structure, drift eliminators and mechanical equipment in the plenum area
- Knock Down Design - simplifies transportation to job sites for easy assembly

## water distribution system

*World-class Marley engineering.*

- Marley MX thermoformed PVC Film Fill – designed to keep circulating water confined to fill area, maximize water contact with airflow, and minimize icing conditions
- High Performance Marley Spiral-Target Nozzles – durable polypropylene design for easy maintenance and reduced clogging
- Simplified Flangeless Inlet – a universal custom-fit piping outlet for easier adaptation to any pipe standard
- Gravity-Flow Distribution – allows for easy, nonrestrictive maintenance while operating

# harness the global power of Marley – start to finish

For years, the Marley brand has been synonymous with innovation and quality. As part of SPX Cooling Technologies fully integrated approach to cooling tower system design, manufacturing, and testing, Marley equipment is crafted to perform as few others can. Plus, you can be assured that all Marley products will provide consistently high-quality, reliable performance, unsurpassed value and superior results.



In addition to a full-line of leading-edge cooling tower products, SPX Cooling Technologies offers you comprehensive services, including:

- Complete design engineering
- International construction
- Thermal enhancement upgrades
- Parts and maintenance
- Inspection and repair
- Tower reconstruction

## vibration-resistant design

Decades of design and manufacturing experience allow Marley to engineer a sturdy, robust structure while minimizing operational vibration levels that could adversely impact efficiency, stability and cooling tower lifespan.

## long-life construction

Corrosion-resistant materials such as hot-dip galvanized steel and fiberglass ensure your NX tower meets the high-demand needs of your HVAC and light industrial applications — and offers outstanding value!

## certified performance

Offering exceptional thermal performance, the NX design is certified by CTI (Cooling Technology Institute). And since it's a Marley, you can be confident it will provide you with years of reliable service.

## low operating cost

Thanks to Marley high-efficiency fill and fans, gravity-flow water distribution and active spray nozzles, and precision drive systems, the NX offers maximized cooling with minimized power consumption.

## all-climate flexibility

From blistering heat to icy cold and everything in between, the NX is designed to meet the rigorous, changing, and varied climates of global markets, while providing simple maintenance.

---

## SPX COOLING TECHNOLOGIES MALAYSIA SDN BHD

UNIT 505, BLOCK B, PHILEO DAMANSARA 2  
NO. 15 JALAN 16/11 OFF JALAN DAMANSARA  
46350 PETALING JAYA, MALAYSIA  
60 3 7947 7800 | [th.my.enquiry@spx.com](mailto:th.my.enquiry@spx.com)  
[spxcooling.com](http://spxcooling.com)

sea\_NX-20A | ISSUED 7/2020

©2011-2020 SPX COOLING TECHNOLOGIES, INC. | ALL RIGHTS RESERVED

In the interest of technological progress, all products are subject to design  
and/or material change without notice.

